

Designed and made in Denmark

SKAARHOJ



Inventing the future of media production control

SKAARHOJ booklet | 1st edition | 2022



Hi Friends

We are passionate about giving you the best possible control experience for your live productions!

With our products you will feel the control at your fingertips. You can control multiple devices, even from different brands - all from the same surface.

You will have less wires and more control. And you will be able to reconfigure and expand your controller to work with your new camera, new switcher, and new router.

We honestly believe we make the best universal broadcast controllers on the planet and we would love to make your professional life easier with them.

Kasper Skårhøj

CEO, Founder and Chief Designer

What We Do	06
Our Software Platforms	09
Supported Hardware	10
Technology Signature	12
PTZ Control	16
Live Switching	26
Camera Shading	40
Routing and Utility	50
Broadcast Audio	60
Replay	62
Link IO	64
Modularity Reimagined	70
Mega Panel	72
Unisketch OS	76
Blue Pill Reactor	80

Camera Shading



PTZ Control



Live Switching



Broadcast Audio



Replay



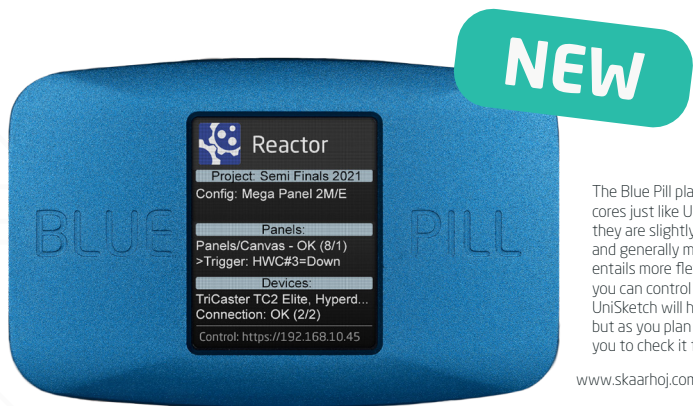
Routing & Utility



Easy Powerful Modular

Blue Pill is the pain killer that makes the world of integration simple and easy again. As a new platform in SKAARHOJ's ecosystem it will boost your SKAARHOJ controllers with unparalleled modularity and capacity for device control. Extension cables will untangle connections. Software applications will add new features down the road.

Blue Pill is available as a stand-alone product or as build-in for a number of new and existing SKAARHOJ controllers. Look out for the "Blue Pill Inside" option (BPI) in this catalog!



The Blue Pill platform also has device cores just like UniSketch OS does. But they are slightly differently designed and generally more powerful and entails more flexibility. The devices you can control with Blue Pill and UniSketch will have a large overlap, but as you plan your designs, we invite you to check it first at our website:

www.skaarhoj.com/support/device-cores

We offer two software platforms now!



UniSketch OS

This legendary platform is used by more than 10.000 controllers world-wide. Choose between more than 100 device cores for big brands like Sony, Panasonic, BirdDog, Blackmagic Design and many more. UniSketch gives you complete control over what the buttons do, so you can gain direct control of the exact features you need.



Blue Pill Reactor

Reactor is our new flagship panel management system on the Blue Pill and controllers with Blue Pill Inside. In Reactor, your panels and your device cores are fused together with unseen simplicity and flexibility at the same time. A decade of experience with UniSketch and broadcast control has driven us to design this new system for the future. Best of all - it's based on known SKAARHOJ technologies like Raw Panel and therefore Reactor is essentially the booster technology that gives your new and existing UniSketch based controllers new capabilities!

Reactor takes modularity to a completely new level. Think about it like this: Two or more SKAARHOJ controllers connected to Reactor will be seen as one single control interface and there is absolutely no limit to how you can distribute actions to your buttons, knobs, faders and joysticks across the controllers. Seamless. 100%.

Blue Pill Inside

Blue Pill Inside means that the hardware of a Blue Pill is moved into your controller instead of combining a stand-alone Blue Pill with a UniSketch panel. The net result is the same, but with some twists: The advantage of Blue Pill Inside is that at the same cost you have everything in one unit - but you can't enjoy the features from UniSketch anymore. Blue Pill was build to honor your investment in SKAARHOJ's UniSketch line of controllers - you essentially enhance UniSketch! If you don't need UniSketch or if you don't know what UniSketch is, we would like to prescribe you the Blue Pill Inside option.



UniSketch



Blue Pill

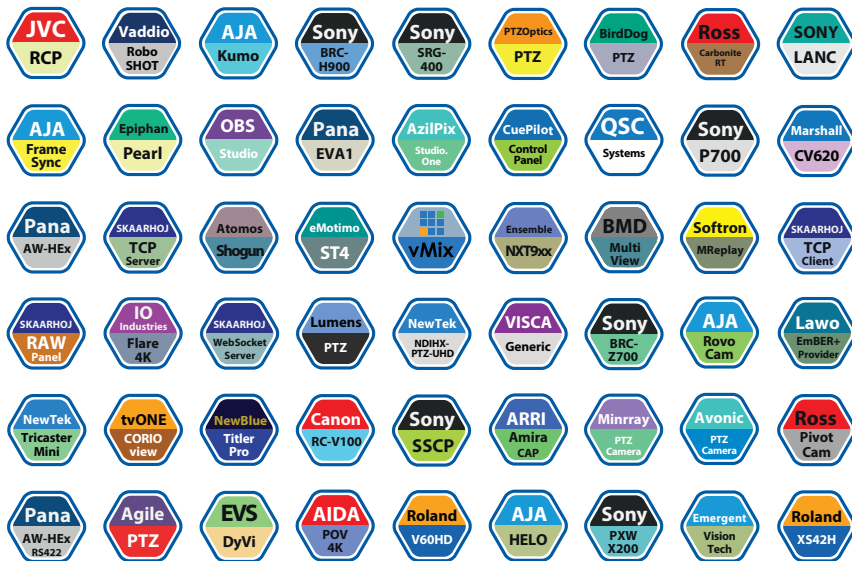


Blue Pill Inside



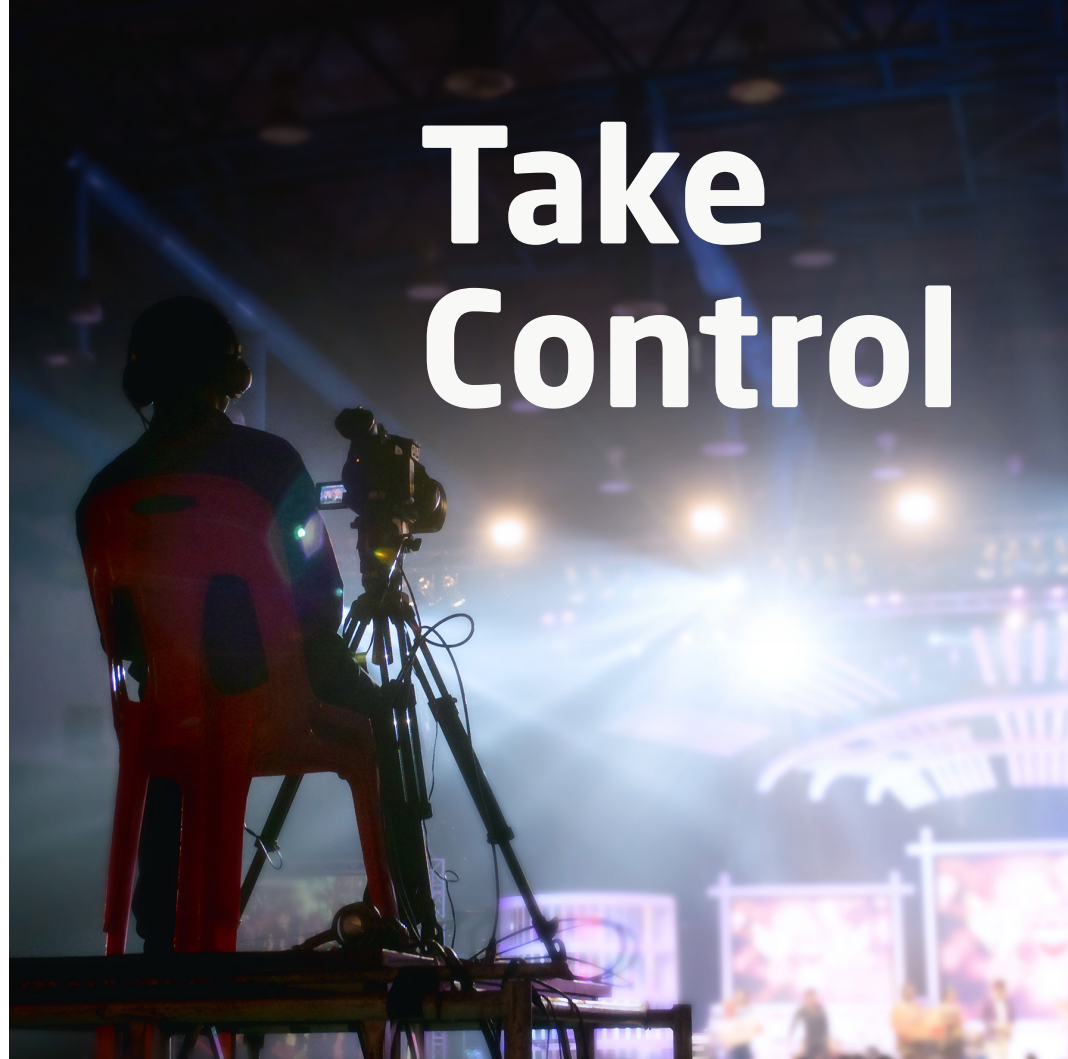
Supported hardware

We call them *device cores* and they are like “apps” you install on your controller. We write new device cores for UniSketch and Blue Pill Reactor all the time. So every day your controller becomes more and more valuable and flexible because new device cores are just a click away.



Here are some of the brands and products in the broadcast and AV industry that we support already or are in the process of supporting.

Take Control



Signature Technologies

Graphical OLED displays - provide buttons, knobs and faders with dynamic labels. They combine large, bold labels with unprecedented levels of detail using titles, icons and scales to enrich the main content. They automatically draw information from the connected devices or you can type in your own labels or upload graphics. Found everywhere in many sizes and dimensions on SKAARHOJ controllers.

RGB backlight - and LED bars are super practical to color code sections based on their assigned functionality. This provides the operator with instinctive clues which can be the critical difference between success and failure. Colors can be assigned manually and SKAARHOJ panels are dimmable. And they look really cool!

Four-way buttons - custom molded tactile elastomer buttons, that detect whether a button is pressed on the left, right, lower or upper edge. This allows the button to adjust values up and down like an encoder when pressing opposing edges. It could even work as a simple joystick. Or it can be just a button. Innovative, insanely flexible and perfect for a universal controller.

Customized faders and knobs - SKAARHOJ is inventing new approaches to T-bars, RCP joysticks, and scroll wheels with precision, flexibility and design in mind. We take the best of tactile live production control and shape it for the future!

Renown Industrial Design - for years we have diligently designed and fine-tuned our custom elastomers, aluminum extrusions and front panels to become unique, beautiful and strong components worthy of the superbly flexible and modular electronics and software that make up our wonderful broadcast and AV controllers.

100% IP & PoE: One cable carries power and the signals for as many devices as you control. Your switcher, video router, recording deck, your cameras even. The future is IP while legacy serial systems can typically be supported by end-point converters or Blue Pill Extension Cables which is often more convenient anyway. And active Power over Ethernet (IEEE802.3af) declutters your desk nicely.

Options

+ NKK

Add best-in-class NKK buttons with sculptured caps to the lower bus row and ME section for old-school luxury.

+ SDI

The SDI option adds a Blackmagic Arduino shield on the controller for reading and writing Camera Control data.

+ GPI

Add general purpose opto-isolated inputs and relay outputs, 2x8 In/Out.

+ JOY

Upgrade to an industrial precision Hall Effect joystick for increased ergonomic comfort and motion precision.

+ Wheel

Substitute the joystick with a powerful and smooth roller wheel to increase the flexibility for multi camera control.

+ Fader

Substitute the joystick with a motorized fader to increase the flexibility for multi camera control.

Options and a choice of platform.

As you browse our products you will find stylish symbols like the above that help you understand which options can be added to a product. Also notice the indication of platform choice for each product.

Platforms



The controller is available with either UniSketch or Blue Pill Inside



The controller is only available with UniSketch



The controller is only available with Blue Pill Inside

Easy Control



PTZ Control

“Awesome! I want it all...thanks!”



Our PTZ controllers are made with the operator in mind! It's Danish design made from a deep understanding of the needs for the PTZ operator. We have created a series of premium surfaces that will follow you for years.

Operate robotic cameras from Panasonic, NewTek, Lumens, Canon, Avonic, Bolin, BirdDog, JVC, Marshall, Datavideo, PTZOptics, Minrray, OPTOver, Ross, Agile, AIDA and Sony.

PTZ Extreme

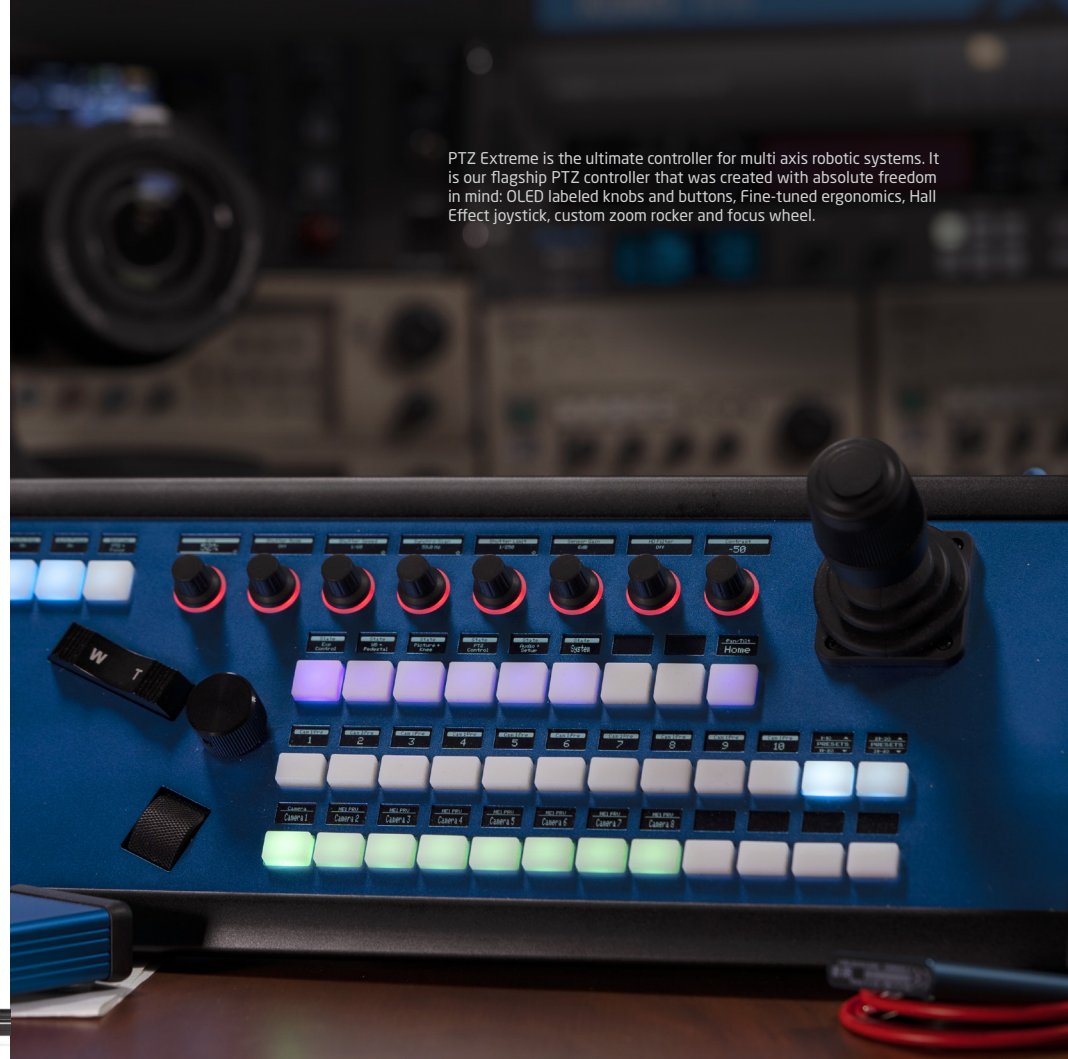
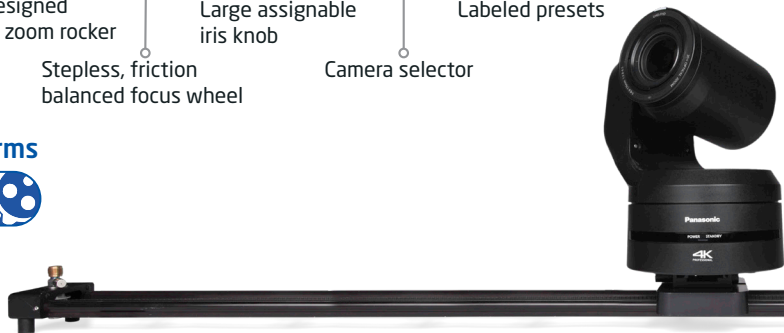
Auxiliary keys for iris/focus options Four-way buttons with legends for menu Freely assignable encoders with OLED 3-axis Hall Effect Joystick



Custom designed aluminum zoom rocker Large assignable iris knob Labeled presets

Stepless, friction balanced focus wheel Camera selector

Platforms



PTZ Extreme is the ultimate controller for multi axis robotic systems. It is our flagship PTZ controller that was created with absolute freedom in mind: OLED labeled knobs and buttons, Fine-tuned ergonomics, Hall Effect joystick, custom zoom rocker and focus wheel.

PTZ Pro

Encoders for settings in large menu display Dedicated focus knob Numbered keys for camera or preset selection 3-axis joystick (Optionally Hall Effect)



Menu selector keys with user banks

Camera selection or labeled preset with RGB backlit keys

Navigation keys for paging

Platforms Options



PTZ Pro is a full featured PTZ controller for robotic cameras. Together with PTZ Fly this is our most popular controller. With dedicated buttons and knobs for all settings and actions, it's easy and quick to use. You will enjoy all the same benefits as found on PTZ Fly while having a larger hand rest and faster, direct access.

PTZ Fly

Options

+ JOY

High-quality backlit encoders with widescreen OLED displays

3-axis joystick (Optionally Hall Effect)



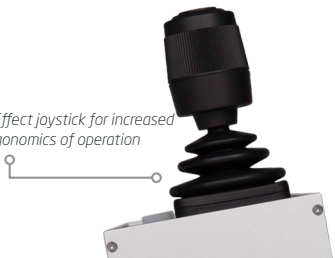
Programmable four-way buttons with bright OLED displays

Multi function keys for presets and camera selection

Platforms



Order with Hall Effect joystick for increased precision and ergonomics of operation



PTZ Fly has a very compact form factor while featuring a full size three-axis joystick. Pan, tilt and rotate the handle to control your cameras. The superb OLED displays clearly show what camera settings you control and which preset you recall. The PTZ Fly is in use in productions around the world, and is a popular choice for many small setups, like churches and universities.



PTZ Wiz

Platforms



Pressure sensitive elastomer zoom rocker

Set camera focus, exposure and other settings with backlit high quality knobs

Pressure and direction sensitive elastomer joystick pad



Multi function keys for presets, camera selection, and live switching



With this controller you can control any SKAARHOJ supported brand!

PTZ Wiz is our smallest PTZ controller, and its great form-factor makes it blend in perfectly! It comes with the full power of UniSketch, which gives you all the same features as all our other PTZ controllers!

The elastomer buttons give you a nice tactile control experience, and the durable aluminum unibody enclosure will ensure that this controller stays with you for many years.



Slim form-factor - sits perfectly on a desk



This controller also comes in black.

Live Switching

“OMG your stuff is the cleverest coolest kit I’ve ever come across



In live production, decisions have to be made quickly! We created our Live Switching controllers with these situations in mind

SKAARHOJ gives you the power to map out all the sources, effects and settings that your next production requires, just the way you want!

Master Keys

Four-way buttons and encoders with RGB back-light and OLED displays

Master Key One is our top of the line stand-alone switcher panel. It's an exceptionally powerful panel with Blue Pill Inside and therefore it also has the native ability to connect an MK48 panel to go modular and expand! Together MK48 and Master Key One feature a powerful blend of industry standard NKK buttons and SKAARHOJ's innovative custom molded elastomer four-way buttons along with an uncompromising use of OLED displays to create a 100% flexible, and universal and modular switcher surface for high-end studios and OB trucks.

UPDATED

RGB multi level metering LEDs for VU, state indication and tally

Platforms



MK48



Platforms



Master Key One



Large, crisp graphical OLED windows for labels and section titles

Sculptured cap RGB broadcast buttons - NKK Japanese quality, best of the best

Custom made SKAARHOJ signature Hall-Effect T-bar with LED ring and OLED Progress Bar

Air Fly Pro

UPDATED

Auxiliary four-way buttons

Backlit encoders with crisp graphical OLED displays

Pressure sensitive elastomer zoom rocker and joystick pad

Keyer section with incredible reconfiguration flexibility



RGB multi level metering LEDs for VU, state indication and tally

12-key bus rows with four-way buttons and OLED legends

Custom SKAARHOJ Hall Effect T-bar and OLED Progress Bar

ME section with multi level shift and user keys

Options

Platforms



Air Fly Pro is the ultimate controller for the one man band setup; it combines PTZ and Live Switching in a beautiful way. The Hall Effect T-bar and the classic ME section will easily make you feel at home, and you can add even more luxuries with NKK buttons.



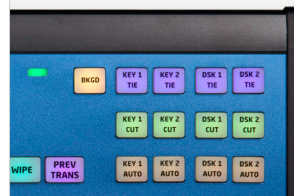
*Air Fly Pro V2 (right photo) is available with UniSketch or Blue Pill Inside.
Air Fly Pro V3 (left photo) is available with Blue Pill Inside only.

Air Fly

Programmable four-way buttons with OLED displays RGB multi level metering LEDs Function selector row Keyer section with all essentials



12-key bus rows labeled for switching 61 dimmable RGB backlit elastomer keys Low profile durable transition fader Shift and user keys in large ME section



ATEM



vMix*



Tricaster

ATEM, TriCaster and vMix variants have unique key labels designed for the features of each system

With Air Fly you have a full featured desktop controller for live switching with TriCaster, ATEM or vMix systems at a very competitive price point. Works out of the box! Nevertheless you can still customize its function. Strong industrial design.

We recommend to choose the Blue Pill Inside option for your vMix switching. This gives you all the power you need in a single panel with no external bridging tools.

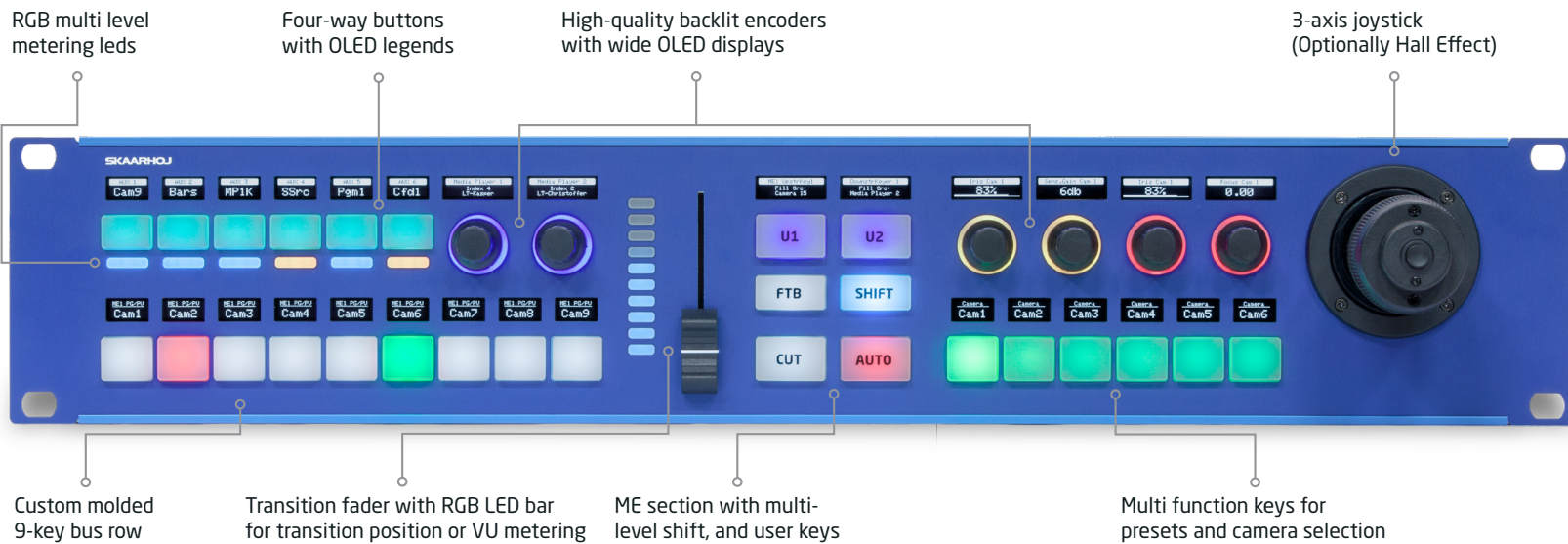
Platforms



*Notice that it is only Air Fly vMix which comes with Blue Pill Inside

Rack Fusion Live

Rack Fusion Live adds PTZ control to your live switching surface in a phenomenally compact controller perfect for small crews. Put it on your table or mount it in your rack. Choose the Blue Pill Inside option to set up virtually unlimited amounts of cameras of mixed models and brands and combine that with your favourite switcher system using an easy configuration and discovery tool - all inside the panel itself!



Options



Platforms



Live Fly

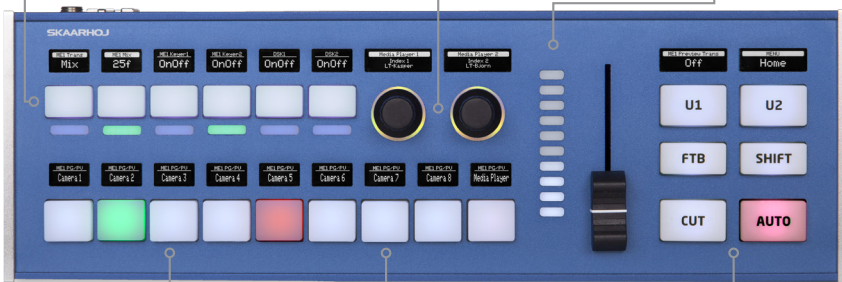
Platforms Options



RGB multi level metering LEDs

Adjust settings or select graphics with precision encoders

Transition fader with RGB LED bar for transition position or VU metering



Versatile bus delegation row with display labels

Programmable four-way buttons for superior flexibility

ME section with multi level shift and user keys

Slim, ergonomic console form factor



Ethernet with POE



Live Fly is a professional controller for 8-camera productions. It's perfect for smaller productions or fixed installations operated by volunteers. Use Blue Pill to combine it with our controller, XPoint 24, to accommodate more sources. For that über-pro feel, you can add classic broadcast buttons from NKK as an option.

Mini Fly

RGB multi level metering LEDs for VU, tally or step indication

Programmable four-way buttons with crisp OLED displays

Multi level shift key with step indicator



Custom molded RGB backlit keys

LED bar for transition position and VU metering

Smooth transition fader and Cut/Auto button

Ethernet with PoE



Slim, ergonomic console form factor

Platforms



The Mini Fly is your Swiss Army knife. It's super compact and yet super flexible, perfect for small live productions with 6 cameras, audio monitoring and transitions. And the six four-way buttons with OLED displays extend its power beyond imagination. Don't get us started...



Camera Shading

“ Can I just say how impressed I am with your level of customer service, it is exceptional



Take control of the colors and shade your cameras to perfection! We support cameras made by Blackmagic Design, Arri, RED, Sony, JVC, AJA, Canon, IO Industries Ensemble Designs, and more.

Color Fly

UPDATED

Programmable four-way buttons with OLED legends

RGB backlit encoders with crisp widescreen OLED legends

Optional SDI I/O for Blackmagic Design Camera Control



Camera selection and multi level shift key - control 4, 8 or even more cameras

Graphical widgets for level monitoring and assignable buttons

4 motorized faders for multi camera iris control



Color Fly with Blue Pill Inside is your uncompromising multi camera RCP bringing you innovative iris control with motorized faders. You get the tactile position feedback of the classic iris joystick but can easily manage 4-8 or more cameras from the same compact panel. With Blue Pill inside you can easily add and mix cameras onto the controller in a few clicks with network device discovery!

Platforms



Options



RCPv2

Super crisp OLED window with large display tiles for settings

Programmable pressure and direction sensitive elastomer joystick pad

Master black knob with dedicated OLED display
Even more buttons with OLEDs

Camera selector DIP, GPI, SDI I/O (optional) on back

Ethernet with PoE



Take the Blue Pill!



Blue Pill is a great addition to one or more RCPv2's!

Utility buttons for preset or camera selection

Eight detented encoders with RGB backlight for function identification

Four-way buttons with OLED legends for dynamic labeling

Camera ID display with OLED technology and RGB tally bar

Classic iris fader, motorized fader, or encoder wheel with display and LED bar

Preview button can trigger GPI or control video router



Motorized Fader option

Wheel option

RCPv2 - the world's most flexible RCP. Fits into your existing bay or sits console style on a table top. Use this universal RCP regardless of which camera brand you shade! With the roller wheel or motorized fader option you have the perfect multi camera RCP. Dedicated to scalability and a positive, unified user experience.

Use a Blue Pill to combine one or more RCPv2s into a powerful cost effective package for shading of many modern cameras. The Blue Pill platform is not only very easy to use, it also supports virtually unlimited cameras in simultaneous use.

Options

+ Wheel

Substitute the joystick with a powerful and smooth roller wheel to increase the flexibility for multi camera control.

+ Fader

Substitute the joystick with a motorized fader to increase the flexibility for multi camera control.

+ SDI

The SDI option adds SDI In and Out for reading and writing Blackmagic Design Camera Control data.

Platforms



RCP Pro

If you want the best comfort and most innovative components, RCP Pro is your choice. This high end camera controller has everything you love from our standard RCPv2, but taken to a really exclusive level! Furthermore it has Blue Pill Inside to support all the new high-end cameras coming to the live production market of today.



GPIO connector is extended to 3 inputs and 3 outputs

Angled display for increased eye comfort

NEW

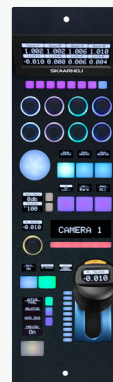
New SKAARHOJ signature joystick with push action, OLED display, color coding, hires magnetic encoder ring and haptic feedback

Platforms



Blue Pill Inside

RCP Pro was the first SKAARHOJ controller to be born with the Blue Pill hardware inside. This means the RCP Pro will natively control a camera like the popular RED KOMODO used by many leading event producers. A physical Blue Pill is therefore not required as a middle man. Obviously that simplifies things. If you want to go for the highest flexibility, the RCPv2 offers you both the UniSketch platform but combined with the physical Blue Pill you can also enjoy the powers of the Blue Pill platform.

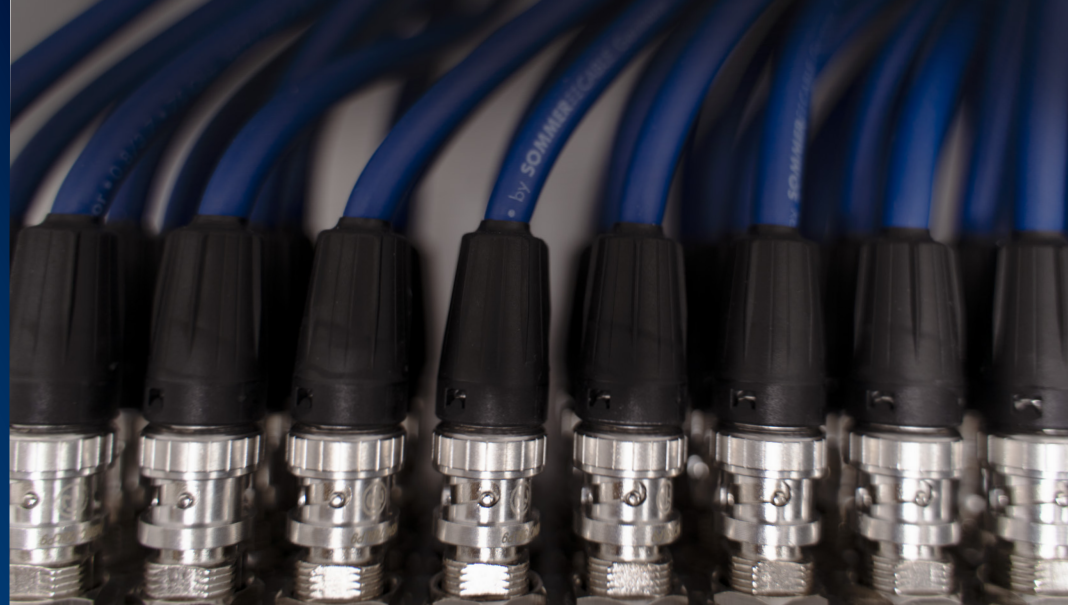


**Freedom
to control
what you
want**



Routing & Utility

" We ran two shows with your controllers last week
- it's truly a pleasure to work with them



Control video routers, window processors, multiviewers, monitors, software, recording decks and streaming devices from brands such as AJA, Blackmagic Design, Ensemble Designs, Sony, Atomos and NETIO.

You can even control more with our generic device cores such as HTTP, TCP, UDP, OSC Artnet or SW-P-08.

Rack Fly Series

Rack Fly Uno, Duo and Trio are raw muscle. All programmable four-way buttons. All RGB color coded. Far from all too much though - you deserve this for your universal control needs whether it's a video router, your VSM system or an AUX bus.

Rack Fly Uno



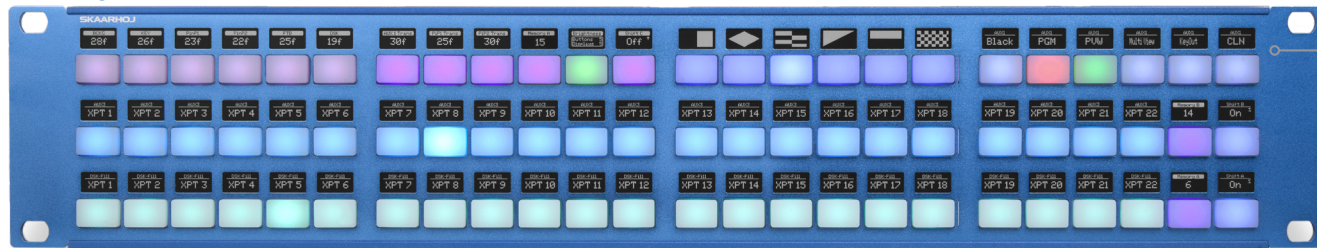
Mount in rack or use as a desk controller

Rack Fly Duo



RGB multilevel metering leds

Rack Fly Trio



Unparalleled flexibility with four-way buttons and OLED displays



Platforms



Rack Control Series

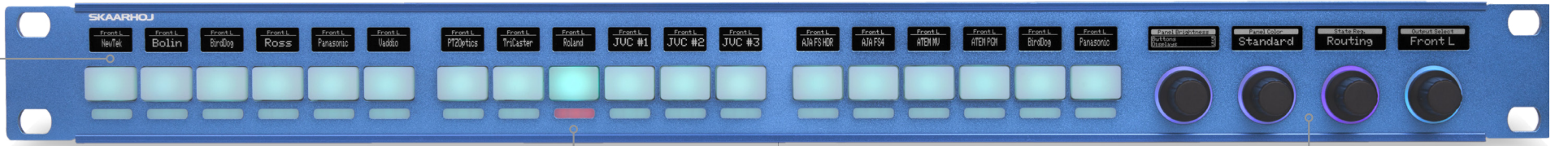
Rack Control Duo has 30 awesome four-way buttons and 12 backlit encoders all with RGB coloring and crisp graphical OLED displays for function legends. Perfect for applications where there is a need to adjust multiple parameters quickly. Fits perfectly in your rack or on your table.



Rack Control Duo



Rack Control Uno



Probably the world's most flexible rack controller! Rack Control Uno has 18 four-way buttons and 4 backlit encoders - all with RGB coloring and crisp, graphical OLED displays for function legends. Great for Routing & Audio control of several devices from multiple brands.

Programmable four-way buttons with OLED legends

RGB multilevel metering leds

High-quality encoders with crisp graphical OLED legends

Quick Pad

Platforms



Backlit encoders with RGB coloring and OLED legends

Programmable four-way buttons with bright OLED displays



A great sidekick for your production!

Quick Pad has 10 awesome four-way buttons and 2 backlit encoders all with RGB coloring and crisp graphical OLED displays for function legends. Fully customizable and integrates with a bunch of broadcast hardware from our extensive list of device cores. Personalize the keys with custom icons from our library or create your very own.

Sleek form factor in high quality anodized aluminum

Take the Blue Pill!



Take the Blue Pill™ box:
"Great with Blue Pill and Blue Pill Inside controllers"

Slim form-factor - perfect for your desk!



This controller also comes in black.

Micro Fly

Platforms



RGB multi level metering LEDs



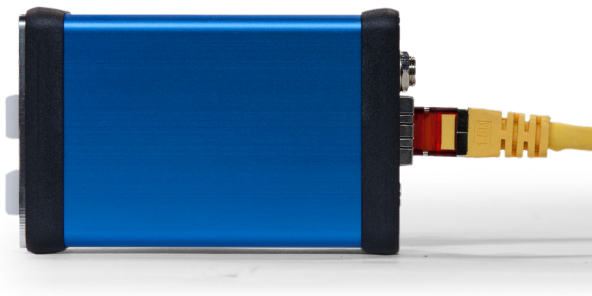
Four-way buttons with crisp OLED displays

Take the Blue Pill!



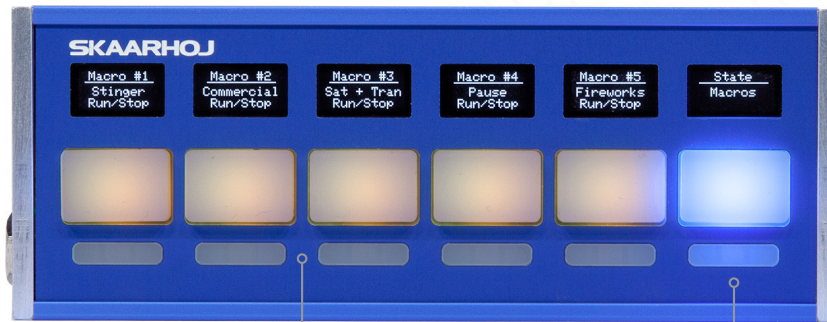
Micro Fly and Quick Bar are great with Blue Pill and Blue Pill Inside controllers

This little fellow is a statement of dedication to the simple solutions. Control your broadcast video switcher, router, monitor, camera, processor in powerful ways with only two four-way buttons, a multi level LED bar and a graphical OLED display.



Quick Bar

Platforms



RGB multi level metering LEDs

Four-way buttons with crisp OLED displays

Here is your go-to auxiliary panel for an aux bus, audio settings, keys; actually whatever UniSketch lets you do. This handy little tool will easily be your preferred panel to hand out to operators in charge of a simple task, as you set up the panel for specific actions. It's also a great secondary panel with Blue Pill or Blue Pill Inside controllers!

Broadcast Audio

“Hey, listen to this!”

Wave Board

NEW

Expand beyond 8 channels with sophisticated meta control section

RGB backlit encoders with crisp widescreen OLED legends



Monitor audio levels with precise OLED VU meters!

Discrete buttons for channel solo, mute, etc.

8 channels of motorized faders for parameter and volume control

Tactile controls of the audio side of your production! A great complement to any ATEM or vMix setup. Choose the Blue Pill Inside option to enjoy control of even more sound devices, like the popular Behringer X32.

Platforms



Replay

“What a goal, let’s take a look

XC8

Platforms



Copy/paste section for clip banks

Monitor timecode and system info with crisp OLED display



Hall Effect replay speed T-bar

NKK broadcast style buttons

Custom made metal Jog-Shuttle wheel

The most flexible replay controller you can get! You can even integrate with it using the Raw Panel Protocol. Many people value the high quality NKK Buttons, and smooth SKAARHOJ T-bar.

Take the Blue Pill!



Blue Pill and XC8 is a great couple with DreamChip cameras, vMix, TriCaster and more

Link IO

“ I want to thank you and your team
for going the extra mile for us



Link IO is glue. It's a series of product that bridges the real world to network bits and bytes. It's how you get tally and shading data to and from SDI, it's your GPIOs, relays and opto isolated inputs, it's the LANC protocol meeting IPv4.

Link IO

ETH GPI Link

Ethernet to GPI/O (General Purpose Interface) with UniSketch OS. Connects relays and opto-isolated inputs with network events. Use it to switch or route a source, start/stop recording, turn on tally lamps etc. 2x8 Inputs/Outputs with option for additional 2x8 I/O.



ETH SDI Link

Receives "UDP Camera Control" information over Ethernet and forwards it on the SDI out connector. A number of alternative firmwares exist for this device to address various use cases.



ETH LANC Link

Converts LANC data to and from ethernet for use with SKAARHOJ controllers, for instance to enable Sony LANC and Canon RC-V100.



SDI B4 Link

Extracts iris information from 3G-SDI input signal according to Blackmagic Designs Camera Control Protocol. Outputs analog B4 lens iris control (Hi-rose-12), tally LED and relay. Supports camera 1-10 by multi-position switch. SDI input passed through on SDI out.



ETH B4 Link

Similar to SDI-B4 Link but the data input is via network instead of SDI. The protocol is also Blackmagic Camera Control, but over UDP ("UDP Camera Control") and typically served by a SKAARHOJ controller. Has an incredibly light and compact form factor.



SDI GPI Link

Converts 16 digital inputs to tally data on the SDI out connector. Supports Blackmagic Design URSA Series and Studio cameras. Additionally 2x8 inputs/outputs can be added. Routing is configurable via UniSketch OS.



ATEM TCP Link

This device is a network point that will bridge your TCP control applications to Blackmagic Design ATEM switchers. This is the solution for Crestron, Extron and similar AV systems that typically lets you set up a TCP connection. Most ATEM commands are systematically implemented for two-way data exchange.



Blue Pill Extension Cable

Blue Pill Extension Cables can bring even more utility and more simple cabling than you ever had! A single extension cable can drive power and signals to your favourite combination of POV camera, specialty lens and Pan-Tilt head - from a simple PoE Ethernet connection. Ask us for combinations!



Camera Tally

Connects multiple SKAARHOJ Tally Lamps using CAT5e. Lamps can be connected in a star-topology (every lamp connects to ETH-TALLY Link) or you can daisy chain up to three lamps on a single wire. ETH-TALLY Link is configurable so that you can create a tally for any device core you wish - like ATEM Switchers, vMix, TSL etc.



SKAARHOJ Connecting the dots

Modularity Reimagined

Mix and match any SKAARHOJ controllers in any way you like. Build your own array of controllers! And have them work together in new and exciting ways. With Blue Pill, it's never been easier and faster.



Platforms



If you need a sidekick to an existing panel, then check out the Inline or Xpoint series. They will give you direct access to more features, like more presets or sources on your ME row. These also work great if you need a more generic surface to work with KeyBridge. The flexibility of SKAARHOJ lets you do whatever you need to do with these!



Inline 10



XPoint 24



XPoint 48



Inline 22



XC7



MEGA PANEL!

The world's largest SKAARHOJ controller! Build your own panel from 1 M/E to 4 M/E. Design your hardware control surface using the high end modules available and bring them together in a nice frame. With a mega panel you can control any gear and give your crew a truly unified way to control switchers, cameras, lights and sound in your production. Mega panel works well with video switchers such as ATEM Constellation, Tricaster, vMix and more.

NEW



Blue Pill is made for Mega Panel!
The UniSketch based controllers in the mega panel melt together in Blue Pill and becomes one seamless control panel. Configuration becomes so much easier, the capacity increases, and future updates will make it an increasingly obvious choice. Blue Pill currently hosts ATEM, vMix, TriCaster and Kairos configurations.

Some of the Mega Panel modules such as the transition block is available with the Blue Pill Inside option. Blue Pill Inside means that essentially the Blue Pills hardware is moved into the panel to provide more convenience and save cabling.



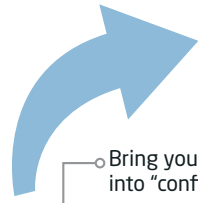
**Feel the control at
your fingertips**



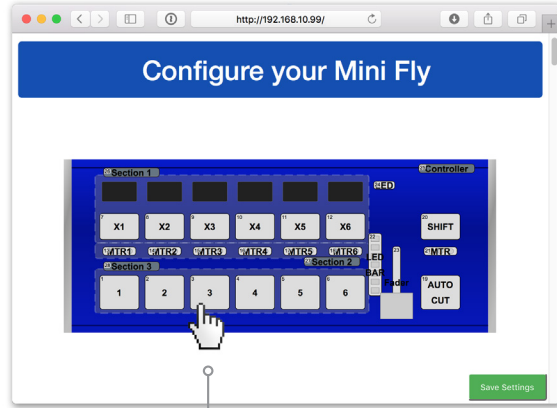
UniSketch OS

UniSketch OS is our software that connects a button press to your live show. It works by routing actions and state values between the interface components on the controller and your video switchers, recording decks and cameras on the set. You may never need to change the defaults, but if you do - it's really easy!

UniSketch also provides the Raw Panel protocol that connects it to Blue Pill Reactor.



Bring your controller into "config mode"



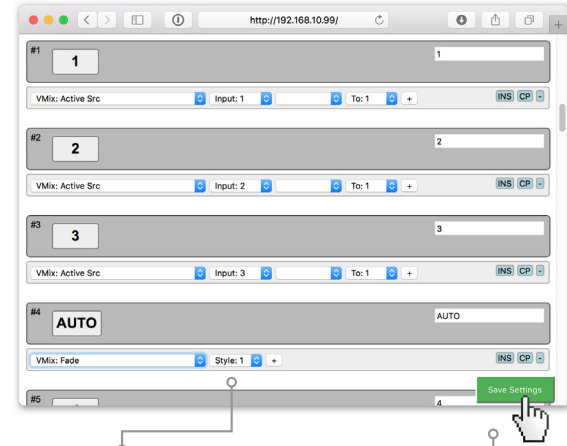
Click the icon of a hardware component



Point a web browser to the IP address of the controller



- BMD HyperDeck #4: Next Clip
- BMD HyperDeck #4: Prev Clip
- BMD HyperDeck #4: Fast Forward
- BMD HyperDeck #4: Reverse
- BMD HyperDeck #4: Jog
- BMD HyperDeck #4: Slot select
- BMD HyperDeck #4: Input
- BMD SmartScope: Brightness
- BMD SmartScope: Contrast
- BMD SmartScope: Saturation
- BMD SmartScope: Scope
- BMD SmartScope: Border
- BMD SmartScope #2: Brightness
- BMD SmartScope #2: Contrast
- BMD SmartScope #2: Saturation
- BMD SmartScope #2: Scope
- BMD SmartScope #2: Border
- BMD SmartScope #3: Brightness
- BMD SmartScope #3: Contrast
- BMD SmartScope #3: Saturation
- BMD SmartScope #3: Scope
- BMD SmartScope #3: Border
- BMD VideoHub: Route Input to Output
- BMD VideoHub: Store preset
- BMD VideoHub: Recall preset
- AJA KUMO: Route Input to Output
- AJA KUMO: Store preset
- AJA KUMO: Recall preset
- VMix: Active Src**
- VMix: Preview Src
- VMix: Prv/Act Src
- VMix: OverlayInput
- VMix: Cut
- VMix: Fade
- VMix: FadeToBlack
- VMix: Transition Rate
- VMix: Change Value
- VMix: CountDown
- VMix: Stream
- VMix: Record
- VMix: Replay Duration
- VMix: Replay Speed
- VMix: Replay
- VMix: Transition To
- VMix: Next Event
- VMix: Previous Event
- VMix: Replay Events
- VMix: Replay Toggle Camera
- VMix: Replay Move Event
- VMix: Replay Copy Event
- VMix: Replay Toggle Live
- VMix: Replay Toggle Direction
- System: Shift Level



Each action will typically provide additional parameters



When you're done, click "Save Settings" and the changes are instantly effective

All installed device cores will show up in the dropdown with the actions they provide



That was cool!
And easy

cores.skaarhoj.com

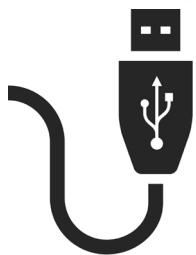


UniSketch OS goes hand in hand with our online repo, cores.skaarhoj.com. Here we store UniSketch OS, the newest device cores and your unique controller configuration. From cores.skaarhoj.com, you receive a uniquely created firmware with exactly the features you asked for.

"Check for Updates" will generate a new firmware with the changes made online

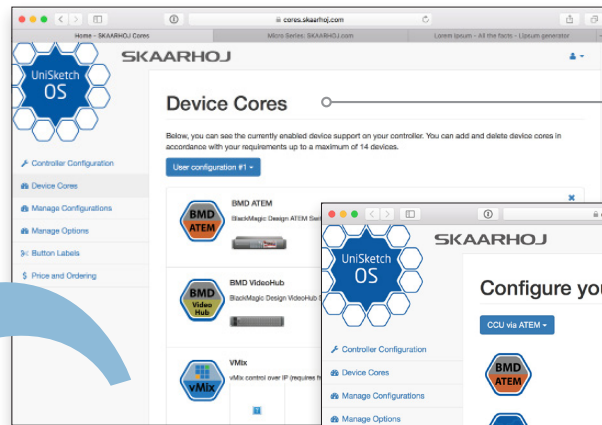


"Online Configuration" will take you to cores.skaarhoj.com



Open the SKAARHOJ firmware application. It will recognize your SKAARHOJ controller

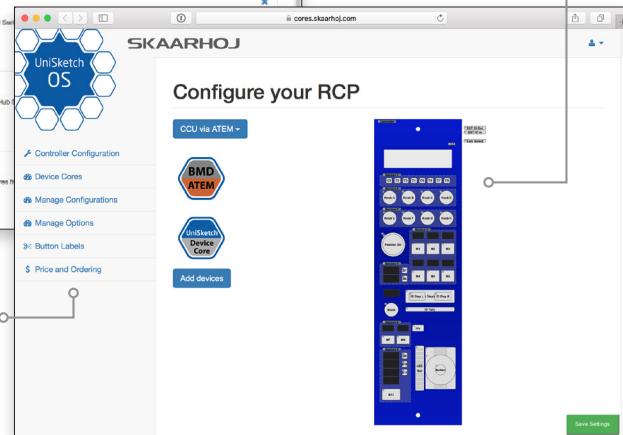
Connect your SKAARHOJ controller to your computer with USB



Add or remove device support with a mouse click

Create any number of configurations for your controller. Easy to change between them any time

Edit button labels, manage options and modules, add text and graphics for the OLED displays



Blue Pill Reactor

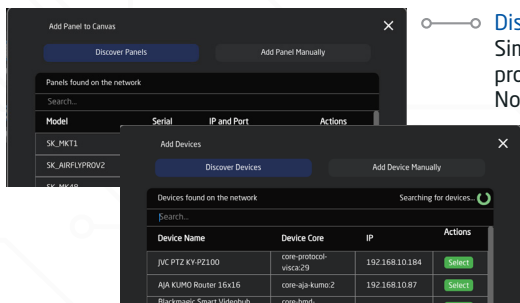
NEW

New software, new possibilities.

Blue Pill Reactor is designed to make the difficult easy. Reactor will let you search for devices on your network and select them in a single click. You can mix and match devices as you want. And you can add as many as you want. This is more difficult on UniSketch but with Reactor... consider it solved!

Reactor is also modularity reinvented. At its core, Reactor is designed to seamlessly integrate many SKAARHOJ panels to be used as one unified panel. Take the mega panel as an obvious example. Or simply connect a Frame Shot to your PTZ controller for visual preset thumbnails.

The engine in Reactor is already incredibly powerful. Today, we start out with the simple, but we can't wait to give you access to more over the months and years to come.



Discover and control

Simply add panels and devices to your project by automated network discovery. No more post-it notes with IP addresses!

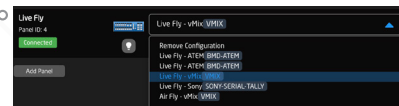
Unite the panels!
Reactor allows your panels to 'talk to each other'.



Menu controls on one panel, device settings on another?
Easy!

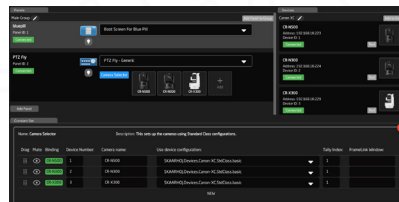
Select a configuration

For each of your panels or for a group of panels you can select a SKAARHOJ designed configuration.



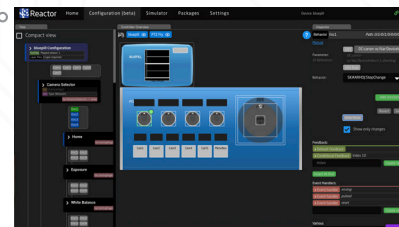
Add devices

Easily add cameras or a switcher to your configuration. Reactor is designed with a flexible interface that provides easy access to setting up selected parameters.



Customization

With the Configuration tab you can change the function of specific hardware components. In a sense it's both easy and intuitive, but it can also call for a really steep learning curve if you insist on getting fancy. Reactor has incredible depths. Allow yourself to relax in the easy lane at first and take the plunge when you are ready.



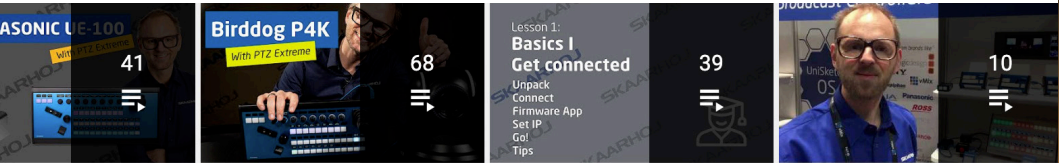
```
1 "Name": "Welcome to Reactor",
2 "layers": [
3
4   "Name": "Thumbnail Configuration",
5   "ImportLayerFiles": [
6     "SKAARHOJ.controllers.BluePill.Generic"
7   ],
8   "onKeyUp": {
9     "pl": "pl"
10  },
11 },
12 ],
13 {
14   "Name": "PTZ Fly Configuration",
15   "ImportLayerFiles": [
16     "SKAARHOJ.controllers.PTZFly.Generic"
17   ],
18   "ConstantSets": {
19     "CameraDetector": {
```

Configurations

Under the hood, Reactor is configured with JSON data structures. For expert users, these can be edited directly. You can also import and export configurations for backup and sharing.



Learn more



Dig deeper and learn more on our channel



That's a wrap!



We ease the control of technology for people in media production



We are now in the US!

www.skaarhoj.com

SKAARHOJ ApS - Rosenkaeret 11C st.th. - 2860 Soeborg - Denmark

Reg. No. 39 69 95 83 | 0045 31 12 52 52

SKAARHOJ Inc. - The Tower Burbank - 3900 West Alameda Ave. - Suite 1200 - 91505 Burbank - California, USA

EIN number 86-3247591 | 001 (818) 395-7275