

SKAARHOJ

Inventing the Future of Live Production Control



Designed and Made in Denmark



Hi Friends

We are passionate about giving you the best possible control experience for your live productions!

With our products you will feel the control at your fingertips. You can control multiple devices, even from different brands - all from the same surface.

You will have less wires and more control. And you will be able to reconfigure and expand your controller to work with your new camera, new switcher, and new router.

We honestly believe we make the best universal broadcast controllers on the planet and we would love to make your professional life easier with them.

Kasper Skårhøj

CEO, Founder and Chief Designer



PTZ Control p. 16

PTZ Extreme



PTZ Pro



PTZ View



Frame Shot Pro



PTZ Fly



PTZ Wiz



Camera Shading p. 52

Color Fly



RCP Pro



RCPv2



Live Switching p. 32

Master Key One



Air Fly Pro



Air Fly



Master Key 48



T-Block Left/Right



XPoint 48



Quick Shot



Frame Shot Plus



Mega Panels



Rack Fusion Live



Live Fly

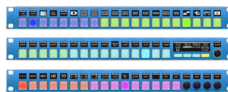


Mini Fly

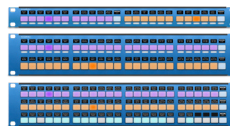


Routing & Utility p. 60

Rack Pro Series



Rack Fly Series



Rack Control Series



XPoint 24



Inline 10



Frame Shot Uno



Quick Bar



Quick Pad



Micro Fly



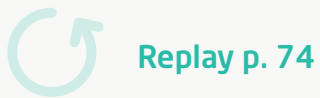
Feel the control at your fingertips



Wave Board



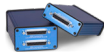
Wave Board Mini



XC8



ETH-GPI Link



ETH-SDI Link



ETH-B4 Link



SDI-GPI Link



ETH-LANC Link



SDI-B4 Link



TCP Link for ATEM

DC Link

Blue Pill Server

Tally Lights



Tally Box



Control Anything

Tactile control at your fingertips!

Our mission is to ease the control of technology for people in live production. We want to make it as easy as possible to control anything! Therefore we work on integration for a lot of different brands and products. Everything from switchers, routers and cameras to software suites and light bulbs!



See all devices we control at devices.skaarhoj.com

...and Everything



...over IP! IP connectivity is the future. SKAARHOJ products connect directly to virtually any number of devices on your network - no PC server needed. One cable carries power and network data.



**) The displayed trademarks and logos are not owned by SKAARHOJ ApS and they are used for identification only. They do not imply endorsement of SKAARHOJ by the trademark owners. They are intended to convey SKAARHOJ's current or future integration with solutions from the displayed brands.*

Reactor



Reactor



Learn more about Reactor

Reactor is SKAARHOJ's panel management software, running embedded on basically every panel we sell! It's designed to make the difficult easy. Reactor will let you search for devices on your network and select them in a single click. You can mix and match devices as you want. And you can add as many as you want.

Reactor is also modularity reinvented. At its core, Reactor is designed to seamlessly integrate many SKAARHOJ panels to be used as one unified panel. Take the Mega Panel as an example, or simply connect a Frame Shot Pro to your PTZ controller for visual preset thumbnails.

Reactor, any Device Cores, and even other applications run on skaarOS Linux inside the panels, collectively referred to as the Blue Pill platform.

Modular!

Unite the panels!

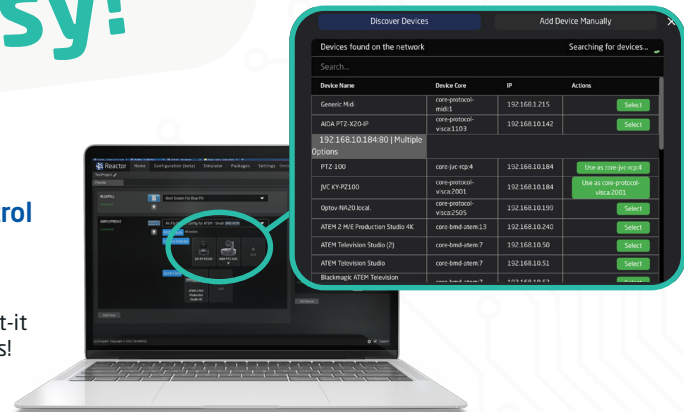
Reactor lets your panels 'melt together'. Joystick and settings controls on one panel, visual preset recall and auxiliary functions on another? Unity is native.



Easy!

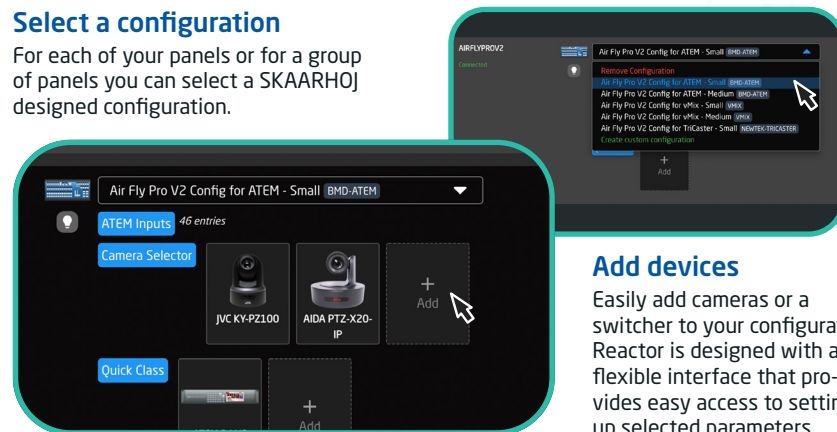
Discover and control

Simply add panels and devices to your project by automated network discovery. No more post-it notes with IP addresses!



Select a configuration

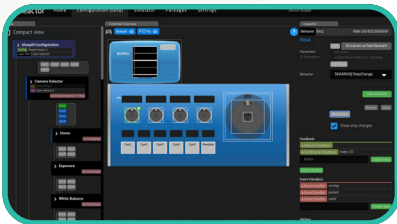
For each of your panels or for a group of panels you can select a SKAARHOJ designed configuration.



Add devices

Easily add cameras or a switcher to your configuration. Reactor is designed with a flexible interface that provides easy access to setting up selected parameters.

Powerful!



Configurations

Under the hood, Reactor is configured with JSON data structures. For expert users, these can be edited directly. You can also import and export configurations for backup and sharing.

Customization

With the Configuration tab you can change the function of specific hardware components. In a sense it's both easy and intuitive, but it can also call for a really steep learning curve if you insist on getting fancy. Reactor has incredible depths. Allow yourself to relax in the easy lane at first and take the plunge when you are ready.

```
1 "Name": "Welcome to Reactor",
2 "Layers": [
3   {
4     "Name": "BlueFill Configuration",
5     "ImportLayerFiles": [
6       "SKAARHOJ.Controllers.BlueFill.Generic"
7     ],
8     "WackyMap": {
9       "g1": "g1"
10    },
11  },
12  {
13    "Name": "PTZ Fly Configuration",
14    "ImportLayerFiles": [
15      "SKAARHOJ.Controllers.PTZFly.Generic"
16    ],
17  }
18 ]
```

Take Control



SKAARHOJ Innovation Lab

SKAARHOJ
64 videos 313 views Updated 6 days ago



You can learn everything you want about Reactor from the designers on our YouTube channel

▶ Play all ⌵ Shuffle

Welcome to the playlist of SKAARHOJ Innovation Lab! Here you can watch exciting videos about our latest ideas and powerful tools. A space for

Signature Technologies

A close-up photograph of a control panel. It features a prominent black knob with a yellow ring around its base. To the left, there are several buttons with labels: 'UpKey2 DVE', 'AUX 2', and 'Cam2'. The panel is illuminated with a blue light, and the background is dark.

Graphical OLED displays - provide buttons, knobs and faders with dynamic labels. They combine large, bold labels with unprecedented levels of detail using titles, icons and scales to enrich the main content. They automatically draw information from the connected devices or you can type in your own labels or upload graphics. Found everywhere in many sizes and dimensions on SKAARHØJ controllers.


RGB backlight - and LED bars are super practical to color code sections based on their assigned functionality. This provides the operator with instinctive clues which can be the critical difference between success and failure. Colors can be assigned manually and SKAARHØJ panels are dimmable. And they look really cool!

Four-way buttons - custom molded tactile elastomer buttons, that detect whether a button is pressed on the left, right, lower or upper edge. This allows the button to adjust values up and down like an encoder when pressing opposing edges. It could even work as a simple joystick. Or it can be just a button. Innovative, insanely flexible and perfect for a universal controller.

Customized faders and knobs - SKAARHØJ is inventing new approaches to T-bars, RCP joysticks, and scroll wheels with precision, flexibility and design in mind. We take the best of tactile live production control and shape it for the future!

Renown Industrial Design - for years we have diligently designed and fine-tuned our custom elastomers, aluminum extrusions and front panels to become unique, beautiful and strong components worthy of the superbly flexible and modular electronics and software that make up our wonderful broadcast and AV controllers.

Designed and Made in Denmark 🇩🇰

A close-up photograph of a glowing orange LED light. The light is positioned in a recessed area of a blue, textured surface, possibly a control panel or a piece of equipment. The background is dark and out of focus, emphasizing the light source.

100% IP & PoE: One cable carries power and the signals for as many devices as you control. Your switcher, video router, recording deck, your cameras even. The future is IP while legacy serial systems can typically be supported by end-point converters or Blue Pill Extension Cables which is often more convenient anyway. And active Power over Ethernet (IEEE802.3af) declutters your desk nicely.

PTZ Control



Our PTZ controllers are made with the operator in mind! It's Danish design made from a deep understanding of the needs for the PTZ operator. We have created a series of premium surfaces that will follow you for years.

Operate robotic cameras from Canon, Panasonic, Sony, BirdDog, PTZ Optics, NewTek, JVC, Lumens, Avonic, Bolin, Marshall, Datavideo, Minrray, OPTOver, Ross and AIDA.

"Awesome! I want it all...thanks!"



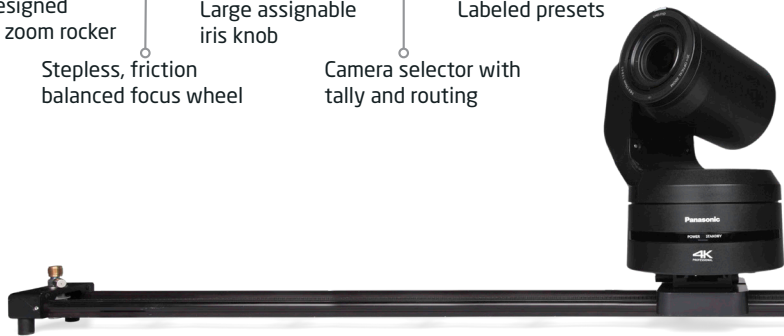
PTZ Extreme

Auxiliary keys for iris/focus options Four-way buttons with legends for menu Freely assignable encoders with OLED 3-axis Hall Effect Joystick



Custom designed aluminum zoom rocker Large assignable iris knob Labeled presets

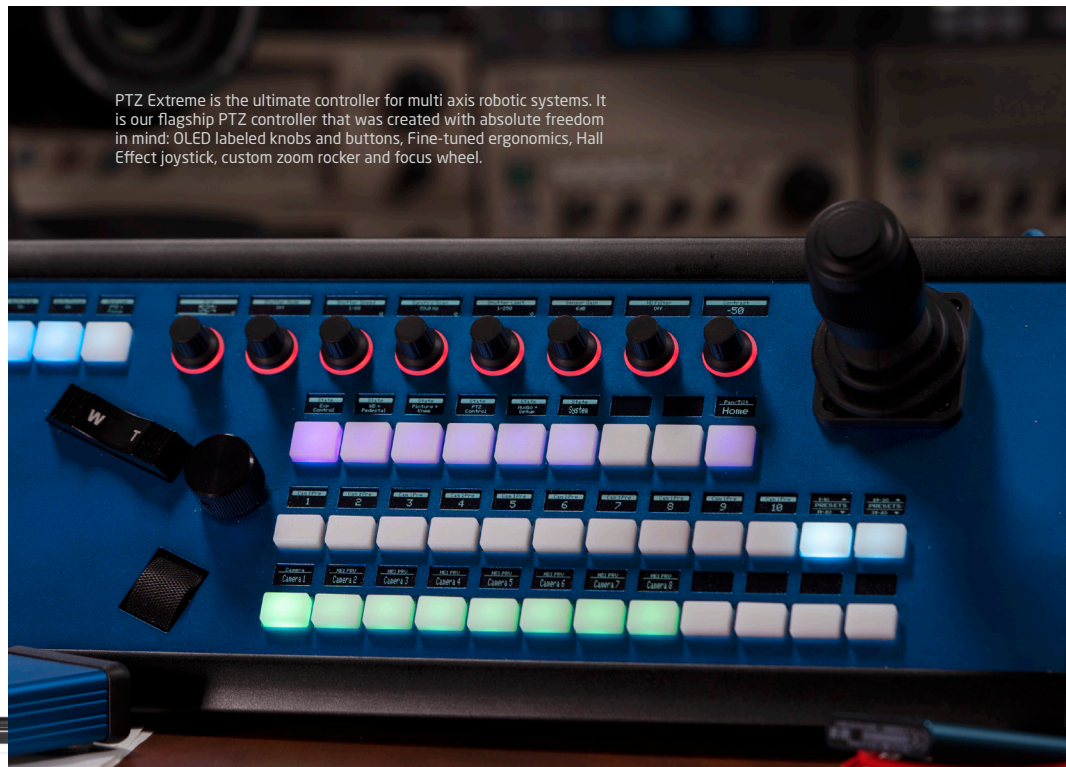
Stepless, friction balanced focus wheel Camera selector with tally and routing



The greatest thing about all our controllers is that they integrate with multiple brands:



PTZ Extreme is the ultimate controller for multi axis robotic systems. It is our flagship PTZ controller that was created with absolute freedom in mind: OLED labeled knobs and buttons, Fine-tuned ergonomics, Hall Effect joystick, custom zoom rocker and focus wheel.



PTZ Pro

Encoders for settings in large menu display Dedicated focus knob Numbered keys for camera or preset selection 3-axis joystick (Optionally Hall Effect)



Menu selector keys with user banks

Camera selection or labeled presets with switcher tally

Add a Cut button for your switcher!

Navigation keys for paging

Option: Hall Effect Joystick

You can order PTZ Pro with the option for an exclusive Hall effect joystick



PTZ Pro is a full featured PTZ controller for robotic cameras. Together with PTZ Fly this is our most popular controller. With dedicated buttons and knobs for all settings and actions, it's easy and quick to use. You will enjoy all the same benefits as found on PTZ Fly while having a larger hand rest and faster, direct access.



PTZ View

Backlit encoders with crisp graphical OLED displays

Exclusive Hall Effect Joystick



Visual thumbnails of recorded presets

Four-way buttons, RGB backlight, large displays

NEW

This is the ultimate basic PTZ controller with built-in color screens to access your presets in a unique way. PTZ View is great for PTZ control and in a combination with other controllers it can become your favourite panel for PTZ control.

Imagine Modularity

Imagine that you want to combine controllers and have them work together on one of your projects. Our PTZ View is a perfect match with the Frame Shot Plus as its sidecar. Take it for a spin!



When you combine multiple SKAARHOJ controllers, they really work seamlessly like one surface. The camera selector is distributed across 8 buttons on two physical controllers. The menu selector is on the left unit, the joystick on the right unit. Visual thumbnails of presets from your church, concert, lecture or conference naturally spreads across the units as well. All thanks to clever design and Reactor, the software that brings it all together.

* Visual thumbnails may require a frame grabbing device and software, such as Frame Link (see page 79)

Frame Shot Pro

Four-way buttons and OLED displays are perfect for auxiliary control of switchers, routers, light etc.

Crisp visual thumbnails for presets and four-way buttons



NEW

This is an amazing panel used as a side car when you match it with another controller. Use your imagination to combine different panels that fits your setup. A panel made for unique visual thumbnail presets. With visual thumbnails, church volunteers, teachers and conference staff will easily identify and recall the right preset.

** Visual thumbnails may require a frame grabbing device and software, such as Frame Link (see page 79)*

Imagine more Modularity

A PTZ Pro and a Frame Shot Pro goes perfectly hand in hand when you want to operate your PTZ Cameras and have easy access to your visual preset thumbnails.



Or imagine a larger setup where you need easy tactile control of you PTZ cameras. The Frame Shot Pro in combination with our PTZ Extreme will solve the struggles.



PTZ Fly

High-quality backlit encoders with widescreen OLED displays

3-axis joystick (Optionally Hall Effect)



Multi function keys for presets and camera selection with tally

Four-way navigation key

Add a Cut button for your switcher!

PTZ Fly has a very compact form factor while featuring a full size three-axis joystick. Pan, tilt and rotate the handle to control your cameras. The superb OLED displays clearly show what camera settings you control and which preset you recall. The PTZ Fly is in use in productions around the world, and is a popular choice for many small setups, like churches and universities.



Option: Hall Effect Joystick

Order with Hall Effect joystick for increased precision and ergonomics of operation

PTZ Wiz



This product comes with UniSketch Inside

Pressure sensitive elastomer zoom rocker

Set camera focus, exposure and other settings with backlit high quality knobs

Pressure and direction sensitive elastomer joystick pad



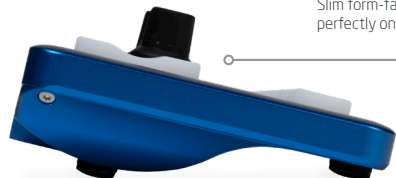
Multi function keys for presets, camera selection, and live switching



With this controller you can control any SKAARHOJ supported brand!

PTZ Wiz is our smallest PTZ controller, and its great form-factor makes it blend in perfectly! To combine beauty and small size with power, we recommend to run one or more PTZ Wiz controllers from a Blue Pill host system. Ask us about it!

The elastomer buttons give you a nice tactile control experience, and the durable aluminum unibody enclosure will ensure that this controller stays with you for many years.



Slim form-factor - sits perfectly on a desk

Take the Blue Pill!



Blue Pill Server is a great addition to the PTZ Wiz which runs on SKAARHOJ's UniSketch technology!

**Freedom
to control
what you
want**



Live Switching



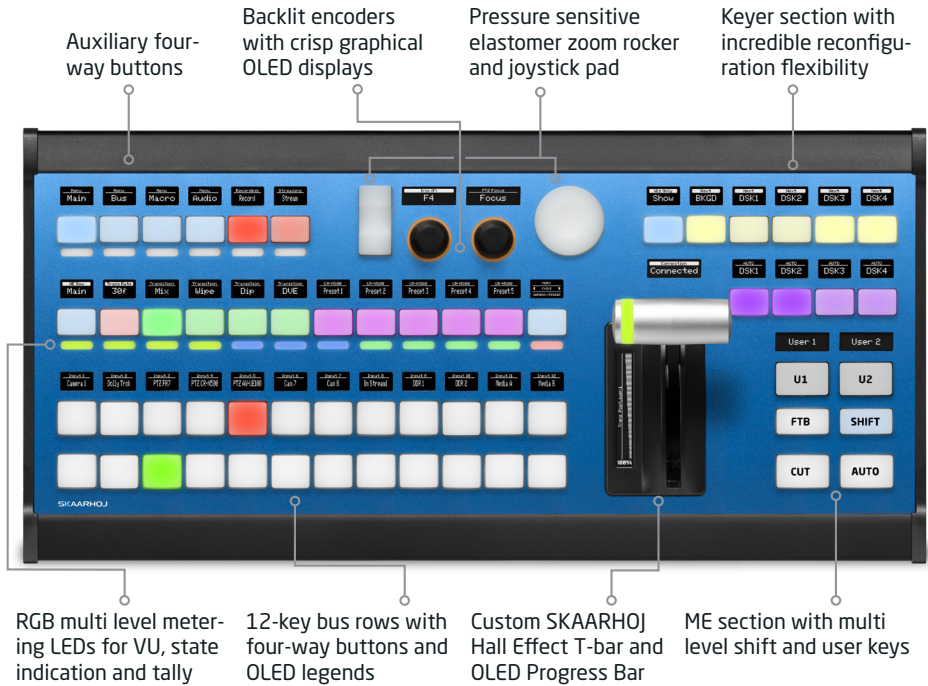
In live production, decisions have to be made quickly! We created our Live Switching controllers with these situations in mind

SKAARHOJ gives you the power to map out all the sources, effects and settings that your next production requires, just the way you want!

"OMG your stuff is the cleverest coolest kit I've ever come across"



Air Fly Pro



Air Fly Pro is the ultimate controller for the one man band setup; it combines PTZ and Live Switching in a beautiful way. The Hall Effect T-bar and the classic ME section will easily make you feel at home, and you can add even more luxuries with NKK buttons.

Option: NKK Buttons

Air Fly Pro comes with NKK buttons as a paid option



Master Key Series



Master Key One is our premium stand-alone switcher panel. With the Blue Pill / Reactor technology inside it is natively able to connect to a Master Key 48 to go modular and expand! Together, Master Key 48 and Master Key One feature a powerful blend of industry standard NKK buttons and SKAARHOJ's innovative custom molded elastomer four-way buttons along with an uncompromising use of OLED displays to create a 100% flexible and modular switcher surface for high-end studios and OB trucks.

RGB multi level metering LEDs for VU, state indication and tally

Support for international characters in displays

Master Key 48



Large, crisp graphical OLED windows for labels and section titles

Sculptured cap RGB broadcast buttons - NKK Japanese quality, best of the best

Four-way buttons with RGB backlight and OLED displays

Master Key One



Custom made SKAARHOJ signature Hall-Effect T-bar with LED ring and OLED Progress Bar

Modularity Reimagined



Combine Everything - in Style!

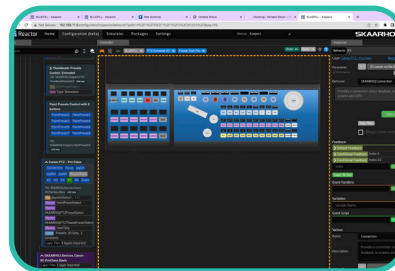
You can combine any two or more SKAARHOJ controllers to form a new, coherent control surface, thanks to Reactor! All you need now is a "sound track", right? The ultimate swag is the hardwood frames we offer to encapsulate your SKAARHOJ units in an awesome statement and for comfort and ergonomics, not to mention. The frames are made to order. Please ask us about it!



XPoint 48

Air Fly Pro

Wave Board Mini



True Modularity

We mean it! Modularity takes on a whole new dimension with Reactor. Assigning functionality to buttons and knobs can be done across multiple panels as if they really were the same piece of physical hardware. This is true for any customized configuration as for the many preset configurations found inside Reactor.



Frame Shot Pro

PTZ Extreme

Mega Panel

Mega Trends

The Mega Panel is six to ten SKAARHOJ controllers arranged together in an exclusive hardwood frame to form a classic multi-M/E switching panel - but with unseen flexibility. The Reactor software unites all the modules for a truly unified experience for the show producers. A Mega Panel is most often used to control video switching with ATEM Constellation, vMix, or TriCaster, but there is really no limits to what SKAARHOJ products you can use. The idea of combining small, flexible controllers to accommodate the increasingly complex and constantly evolving production needs of today is a mega trend we have seen coming for years!

Master Key 48

Master Key 48

T-Block Left

Quick Shot

Wave Board Minii



T-Block Left and T-Block Right are variations of the same transition block design. The T-bar location is offset so they do not block each other when arranged in a multi-M/E frame set up.

Master Key 48

Master Key 48

T-Block Right

Frame Shot Plus

PTZ View

Side Cars

Your Mega Panel wouldn't be the same without a custom selection of side car modules. This is how you add audio control, camera shading, DVE position and resizing control, PTZ camera operation or classic shot box capacity.



Frame Shot Plus

This side car is a wonderful mix of color displays, four-way buttons, encoders and classic mono-chrome OLEDs. It's complete when combined with PTZ View to form a powerful ProClass PTZ controller.

PTZ View

Stand-alone PTZ controller, popular for basic operators, but with the surprising power to become a ProClass PTZ controller when matched up with Frame Shot Plus or Frame Shot Pro.

Can I have it in black?

While the sparkling blue anodized aluminum is SKAARHOJ's iconic trade mark, we do (often) accommodate to black on special request. It will have a lead time and additional cost, but feel free to ask us! Mega Panels in particular are often delivered in black.



Quick Shot

Classic shot-box with a slight twist: It's not just buttons, it's four-way buttons which means any button is effectively an encoder for value adjustment. This makes it incredibly versatile for changing settings.

Wave Board Mini

Popular option for adjustment of camera iris and other shading parameters, audio input or master volume etc. Buttons are useful for paging through multiple sets of channels on the controller.

Air Fly

Programmable four-way buttons with OLED displays RGB multi level metering LEDs Function selector row Keyer section with all essentials



12-key bus rows labeled for switching

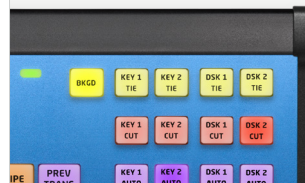
61 dimmable RGB backlit elastomer keys

Low profile durable transition fader

Shift and user keys in large ME section

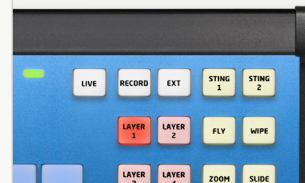
Option: For ATEM

Blackmagicdesign



Option: For vMix

vMix



Option: For TriCaster

NewTek



ATEM, TriCaster and vMix variants have unique key labels designed for the features of each system

With Air Fly you have a full featured desktop controller for live switching with Tricaster, ATEM or vMix systems at a very competitive price point. Works out of the box! Nevertheless you can still customize its function. Strong industrial design that gives you all the power you need in a single panel with no external bridging tools.

Rack Fusion Live

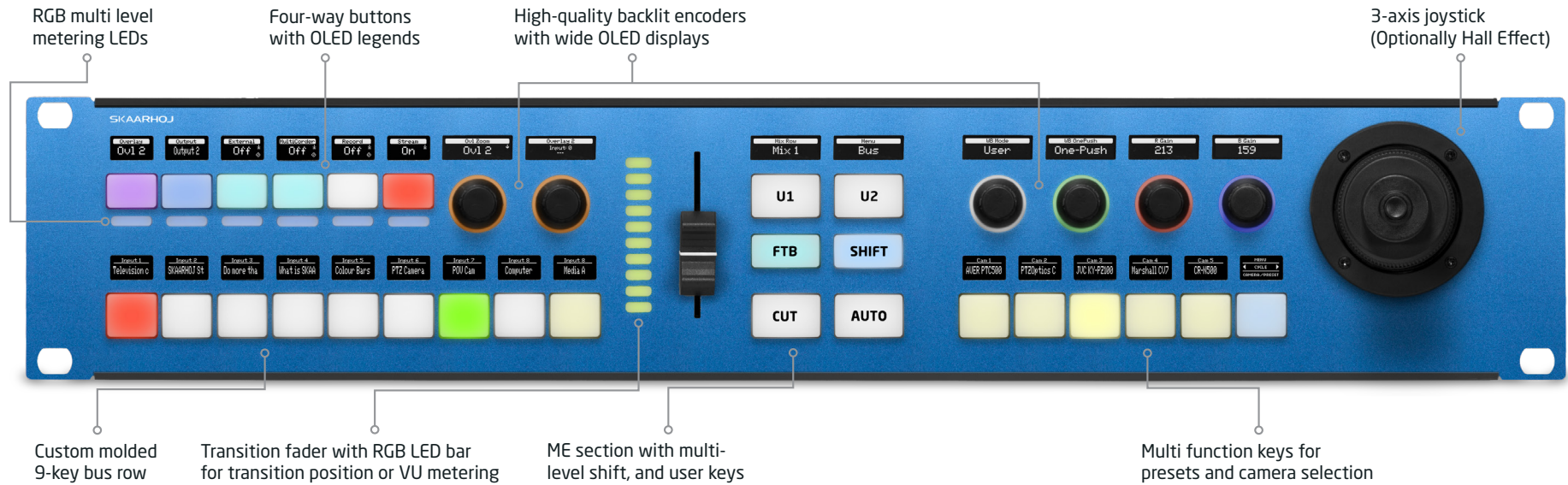
Rack Fusion Live adds PTZ control to your live switching surface in a phenomenally compact controller perfect for small crews. Put it on your table or mount it in your rack.

With the embedded panel management software, Reactor, you can set up virtually unlimited amounts of cameras of mixed models and brands and combine that with your favourite switcher system using an easy configuration and discovery tool - all inside the panel itself!

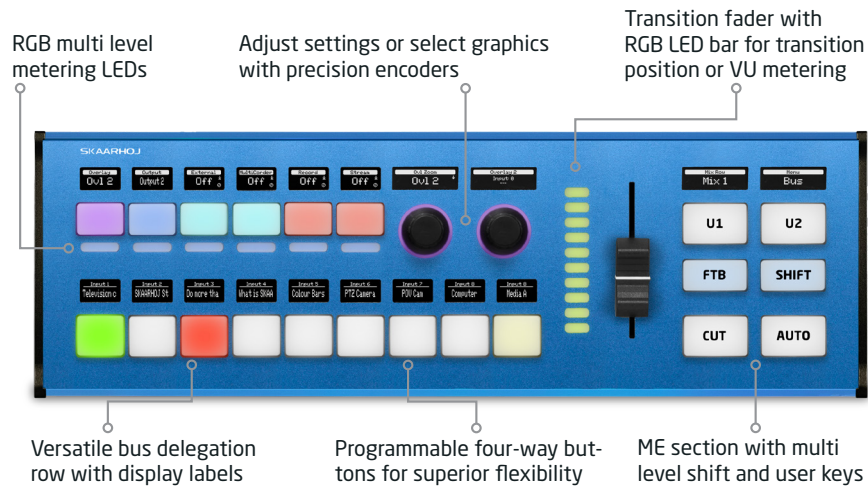
Option: Hall Effect Joystick



Option: NKK Buttons

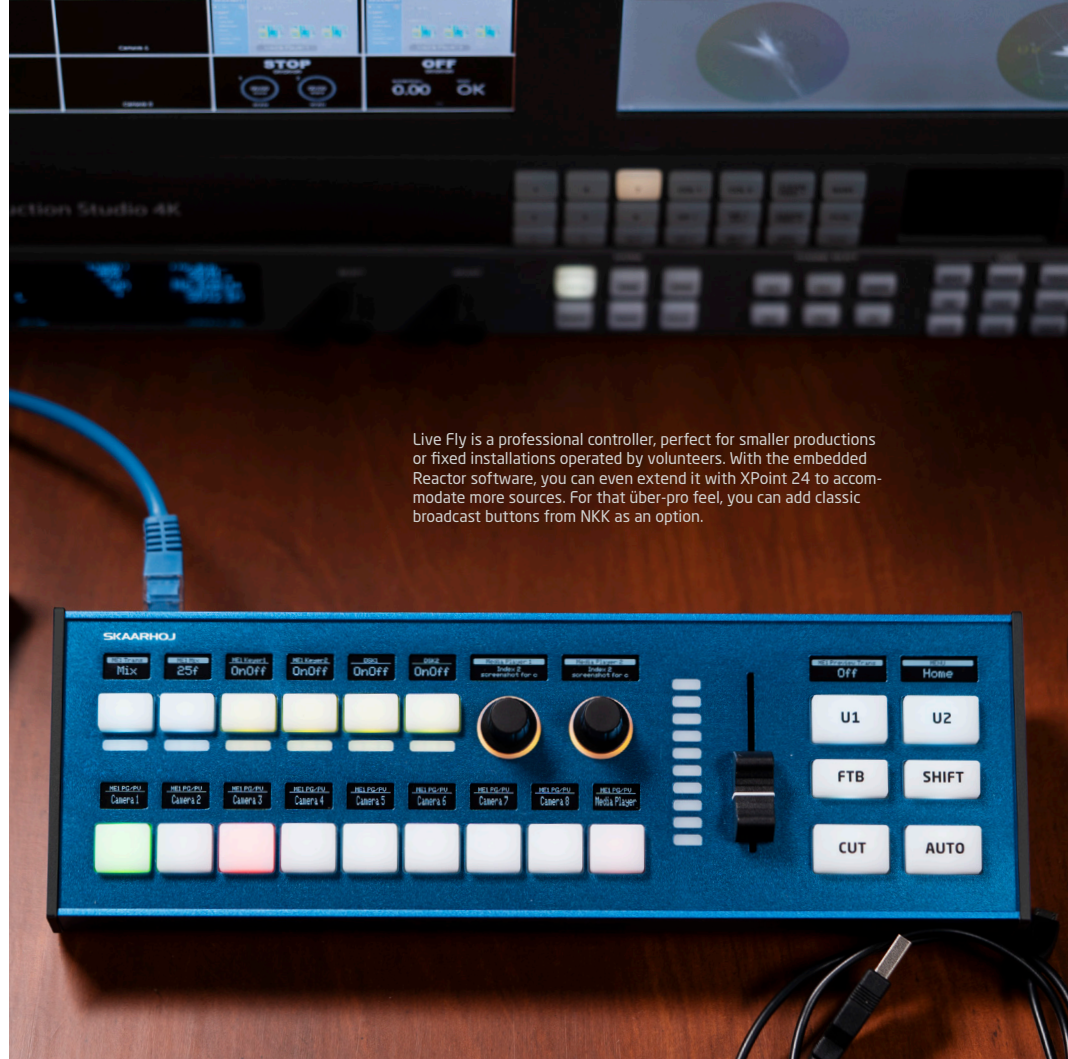


Live Fly



Option: NKK Buttons

Live Fly also comes with NKK buttons as a paid option



Live Fly is a professional controller, perfect for smaller productions or fixed installations operated by volunteers. With the embedded Reactor software, you can even extend it with XPoint 24 to accommodate more sources. For that über-pro feel, you can add classic broadcast buttons from NKK as an option.

Mini Fly

RGB multi level metering LEDs for VU, tally or step indication

Programmable four-way buttons with crisp OLED displays

Multi level shift key with step indicator



Custom molded RGB backlit keys

LED bar for transition position and VU metering

Smooth transition fader and Cut/Auto button

Ethernet with PoE



Slim, ergonomic console form factor



The Mini Fly is your Swiss Army knife. It's super compact and yet super flexible, perfect for small live productions with 6 cameras, audio monitoring and transitions. And the six four-way buttons with OLED displays extend its power beyond imagination. Don't get us started...



Camera Shading

Take control of the colors and shade your cameras to perfection!

We support cameras and devices made by BlackMagic Design, Canon, RED, ARRI, DreamChip, Sony, Panasonic, JVC, AJA, IO Industries, including almost any PTZ camera you can find.

“Can I just say how impressed I am with your level of customer service, it is exceptional”



RCP Pro

If you want the best comfort and most innovative components, RCP Pro is your choice. This high end camera controller has everything you love from our standard RCPv2, but taken to a really exclusive level! Furthermore it has Blue Pill Inside to support all the new high-end cameras coming to the live production market of today.



Angled display for increased eye comfort

GPIO connector is extended to 3 inputs and 3 outputs

SKAARHOJ signature RCP joystick with push action, OLED display, color coding, hires magnetic encoder ring



RCPv2



This product comes with UniSketch Inside

Super crisp OLED window with large display tiles for settings

Programmable pressure and direction sensitive elastomer joystick pad

Master black knob with dedicated OLED display

Camera selector DIP, GPI, SDI I/O (optional) on back

Ethernet with PoE



Utility buttons for preset or camera selection

Eight detented encoders with RGB backlight for function identification

Four-way buttons with OLED legends for dynamic labeling

Camera ID display with OLED technology and RGB tally bar

Classic iris fader, motorized fader, or encoder wheel with display and LED bar

Preview button can trigger GPI or control video router



Option: Motorized Fader



Option: Roller Wheel

RCPv2 - the world's most flexible RCP. Fits into your existing bay or sits console style on a table top. Use this universal RCP regardless of which camera brand you shade! With the roller wheel or motorized fader option you have the perfect multi camera RCP. Dedicated to scalability and a positive, unified user experience.

The full potential of one or more RCPv2s is achieved when used with a Blue Pill Server as a host system. You can easily combine one or more RCPv2s into a powerful cost effective package for shading of many modern cameras. The Blue Pill platform is not only very easy to use, it also supports virtually unlimited cameras in simultaneous use. Ask us about it!

Take the Blue Pill!



Blue Pill Server is a great addition to one or more RCPv2 panels! RCPv2 runs on UniSketch technology.

Color Fly

Programmable four-way buttons with OLED legends

RGB backlit encoders with crisp widescreen OLED legends

Optional SDI I/O for Blackmagic Design Camera Control



Camera selection and multi level shift key - control 4, 8 or even more cameras

Graphical widgets for level monitoring and assignable buttons

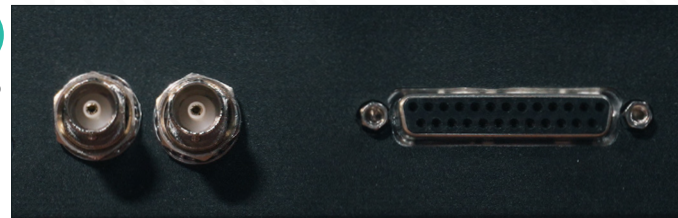
4 motorized faders for multi camera iris control



Color Fly is your uncompromising multi-camera RCP bringing you innovative iris control with motorized faders. You get the tactile position feedback of the classic iris joystick but can easily manage 4-8 or more cameras from the same compact panel. With Blue Pill inside you can easily add and mix cameras onto the controller in a few clicks with network device discovery!

Option: SDI & GPI

Color Fly also comes with SDI & GPI as a paid option



Routing & Utility



Control video routers, window processors, multiviewers, monitors, software, recording decks and streaming devices from brands such as AJA, Blackmagic Design, Ensemble Designs, Sony, Atomos and NETIO.

You can even control more with our generic device cores such as HTTP, TCP, UDP, OSC Artnet or SW-P-08.

"We ran two shows with your controllers last week - it's truly a pleasure to work with them!"



Rack Pro Series

Raw Panel

The Rack Pro series is perfect for system integration using the Raw Panel protocol. Well, basically any SKAARHOJ panel is born with native support for connecting to third party software and hardware. It's in the DNA! Check out the Raw Panel booklet

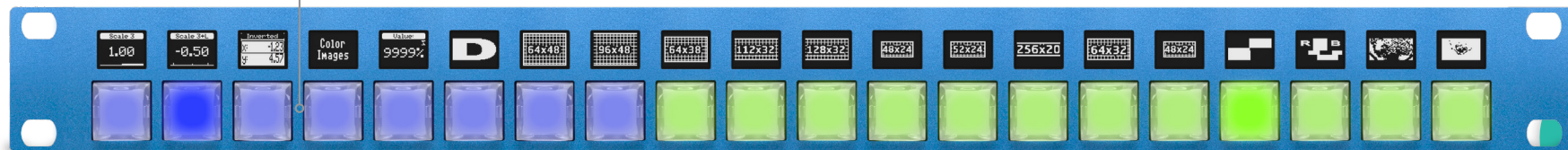


Scan and get to the good Raw Panel stuff!



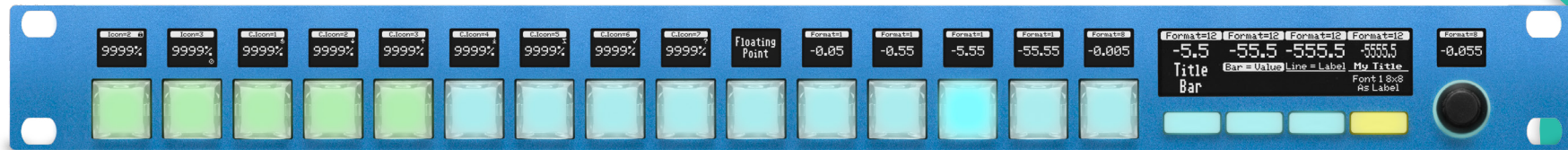
Perfect for System Integration

Rack Pro 1



Sculptured cap RGB broadcast buttons
- NKK Japanese quality, best of the best

Rack Pro 2



Rack Pro 3



NEW

NEW

NEW

The Rack Pro series is presented on this page with dummy colors and display contents, sent to them via the Raw Panel protocol over TCP. This illustrates the variety of possibilities you can achieve yourself when embracing Raw Panel integration with your software or hardware product.

Backlit encoders with crisp graphical OLED displays

Rack Fly Series



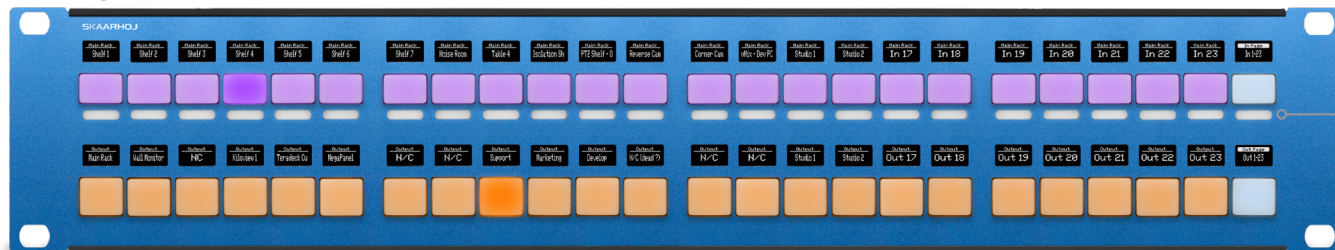
Rack Fly Uno, Duo and Trio are raw muscle. All programmable four-way buttons. All RGB color coded. You deserve this for your universal control needs whether it's a video router, your VSM system or an AUX bus.

Rack Fly Uno



Unparalleled flexibility with four-way buttons and OLED displays

Rack Fly Duo



Perfect for System Integration

RGB multilevel metering leds

Rack Fly Trio



Mount in rack or use as a desk controller



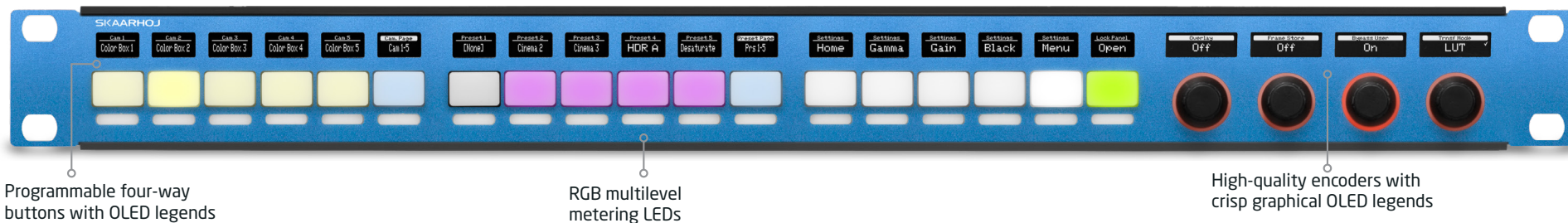
Rack Control Series

AJA VIDEO SYSTEMS® Rack Control Uno and Duo has ready-made profiles for AJA ColorBox!

Probably the world's most flexible rack controller! Rack Control Uno has 18 four-way buttons and 4 backlit encoders- all with RGB coloring and crisp, graphical OLED displays for function legends. Great for Routing & Audio control of several devices from multiple brands.

Perfect for
System Integration

Rack Control Uno



Programmable four-way buttons with OLED legends

RGB multilevel metering LEDs

High-quality encoders with crisp graphical OLED legends

Rack Control Duo



Four-way buttons with crisp OLED displays

Rack Control Duo has 30 awesome four-way buttons and 12 backlit encoders all with RGB coloring and crisp graphical OLED displays for function legends. Perfect for applications where there is a need to adjust multiple parameters quickly. Fits perfectly in your rack or on your table.

Frame Shot Uno

Large 96x64 pixel color displays



Elastomer four-way buttons with RGB backlight

NEW

Perfect for
System Integration

160 images a second with Raw Panel

Frame Shot Uno is perfect for system integration using the Raw Panel protocol. With a simple TCP connection you can send up to 160 small images to the panel per second to animate video in the button displays.



Quick Bar

Here is your go-to auxiliary panel for an aux bus, audio settings, keys, actually whatever UniSketch let you do. This handy little tool will easily be your preferred panel to hand out to operators in charge of a simple task, as you set up the panel for specific actions.



Inline 10

With Inline 10 you'll get the perfect modular controller to use alone or with our other small form factor controllers. The Inline 10 has a row of 6 awesome four-way buttons with RGB coloring, 4 encoder knobs, and 10 customizable graphical OLED displays for function legends.



XPoint 24

With XPoint 24 you'll get the perfect small form factor modular desk controller. It can be used as a stand alone unit or paired with one of our other controllers for increased flexibility and control.



Quick Pad

A great sidekick for your production! Quick Pad has 10 awesome four-way buttons and 2 backlit encoders all with RGB coloring and crisp graphical OLED displays for function legends. Fully customizable and integrates with a bunch of broadcast hardware from our extensive list of device cores. Personalize the keys with custom icons from our library or create your very own.



Micro Fly

This little fellow is a statement of dedication to the simple solutions. Control your broadcast video switcher, router, monitor, camera, processor in powerful ways with only two four-way buttons, a multi level LED bar and a graphical OLED display.



Take the Blue Pill!



The Blue Pill Server is a great match for the Quick Pad and Micro Fly



These products come with UniSketch Inside

Audio



Control audio software and hardware such as DirectOut PRODIGY.MP, Behringer X32, TriCaster, vMix and ATEM switchers.

Perfect solutions for when you want to control mixing consoles, equalization and compression devices, and multi-track recording systems.

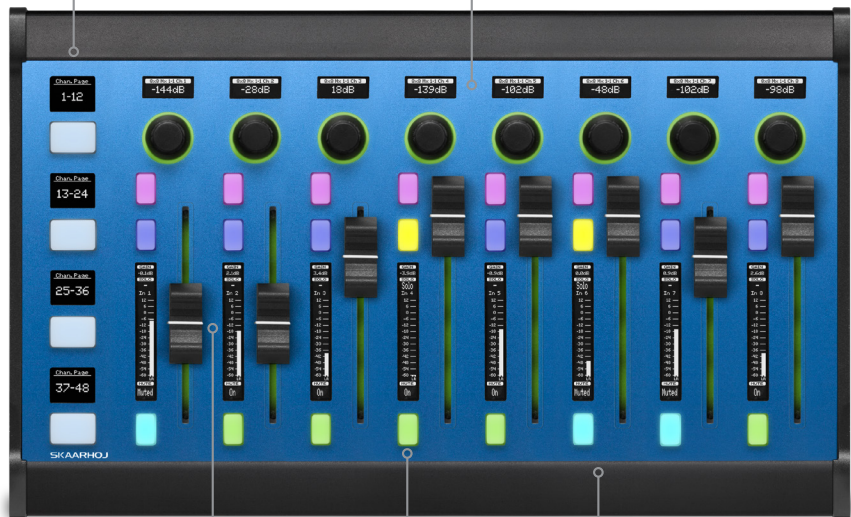
“Hey, listen to this!”



Wave Board

Expand beyond 8 channels with sophisticated meta control section

RGB backlit encoders with crisp widescreen OLED legends



Monitor audio levels with precise OLED VU meters!

Discrete buttons for channel solo, mute, etc.

8 channels of motorized faders for parameter and volume control

Wave Board Mini



Bring the panels together and expand your fader banks!



4 channels of motorized faders for parameter and volume control

Tactile controls of the audio side of your production! A great compliment to any ATEM or vMix setup. Enjoy the control of even more sound devices, like the popular Behringer X32 or DirectOut PRODIGY.MP.

Use the Wave Board Mini as a standalone 4 fader bank or a side car to the Wave Board to expand your fader options for a larger setup.

NEW

Replay



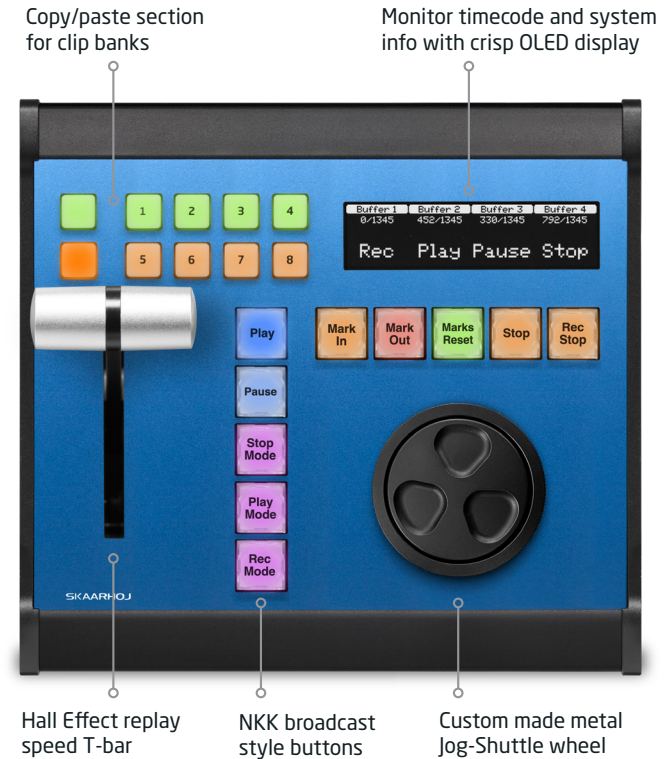
Play back any recorded audio or video content in your broadcasting setup. Control video servers, control systems, and video switchers to easily select and play different recordings.

Get the control instantly and play it one more time.

“What a goal, let’s take a look!”

XC8

The most flexible replay controller you can get! You can even integrate with it using the Raw Panel Protocol. Many people value the high quality NKK Buttons, and smooth SKAARHOJ T-bar.



Link IO



Link IO is glue. It's a series of product that bridges the real world to network bits and bytes. It's how you get tally and shading data to and from SDI, it's your GPIOs, relays and opto isolated inputs, it's the LANC protocol meeting IPv4.

"I want to thank you and your team
for going the extra mile for us"



Link IO

ETH-GPI Link

Ethernet to GPI/O (General Purpose Interface) with UniSketch OS. Connects relays and opto-isolated inputs with network events. Use it to switch or route a source, start/stop recording, turn on tally lamps etc. 2x8 Inputs/Outputs with option for additional 2x8 I/O. To unleash the full potential, connect it via Raw Panel to any Blue Pill Inside device



This product comes with UniSketch Inside

ETH-SDI Link

Receives "UDP Camera Control" information over Ethernet and forwards it on the SDI out connector. A number of alternative firmwares exist for this device to address various use cases.



ETH-LANC Link

Converts LANC data to and from ethernet for use with SKAARHOJ controllers, for instance to enable Sony LANC and Canon RC-V100.



SDI-B4 Link

Extracts iris information from 3G-SDI input signal according to Blackmagic Designs Camera Control Protocol. Outputs analog B4 lens iris control (Hi-rose-12), tally LED and relay. Supports camera 1-10 by multi-position switch. SDI input passed through on SDI out.



ETH-B4 Link

Similar to SDI-B4 Link but the data input is via network instead of SDI. The protocol is also Blackmagic Camera Control, but over UDP ("UDP Camera Control") and typically served by a SKAARHOJ controller. Has an incredibly light and compact form factor.



SDI-GPI Link

Converts 16 digital inputs to tally data on the SDI out connector. Supports Blackmagic Design URSA Series and Studio cameras. Additionally 2x8 inputs/outputs can be added. Routing is configurable via UniSketch OS. To unleash the full potential, connect it via Raw Panel to any Blue Pill Inside device



This product comes with UniSketch Inside

TCP Link for ATEM

This is the solution to connect Blackmagic Design ATEM switchers to Crestron, Extron, AMX, QSC and similar AV systems that typically lets you set up a basic TCP connection. Most ATEM commands are systematically implemented for two-way data exchange.



DC Link

DC Link is the extended version of TCP Link for ATEM. It's a Blue Pill hosted application that bridges any SKAARHOJ device core to simple text based commands. Purchase a license for DC Link and you are instantly able to use TCP, HTTP, Websocket, JSON-RPC and simple ASCII commands to integrate device control from your Blue Pill device. Ask us for details!



Camera Tally



This product comes with UniSketch Inside

Tally Box

Connects multiple SKAARHOJ Tally Lamps using CAT5e. Lamps can be connected in a star-topology (every lamp connects to Tally Box) or you can daisy chain up to three lamps on a single wire. Tally Box is configurable so that you can create a tally for any device core you wish - like ATEM Switchers, vMix, TSL etc.

To unleash the full potential of Tally Box, connect it via Raw Panel to any Blue Pill Inside device, then they opportunities are limitless.



Tally Light



Blue Pill Server

Blue Pill Server is the pain killer that makes the world of integration simple and easy again. As a new platform in SKAARHOJ's ecosystem, it will boost your SKAARHOJ controllers with unparalleled modularity and capacity for device control. Extension cables will untangle connections. Software applications will add new features down the road.



Stream Deck over IP

The Blue Pill can turn a Stream Deck into an IP enabled Raw Panel device you can integrate with professional SKAARHOJ controllers using Reactor.



Frame Link

Attach a web camera type USB frame grabber and snap thumb-nails for your PTZ cameras from any multi view screen.



Learn more here!



On our YouTube channel you can learn all about our products, learn what we integrate with and find our support videos. See you!

youtube.com/skaarhoj



Raw Panel™, Blue Pill™, Reactor™, UniSketch™, Device Core™, and all product names (specified on the QR link to the left) are trademarks of SKAARHOJ ApS, Denmark, for use with Broadcast, Audiovisual and industrial control applications. SKAARHOJ is a registered trademark of SKAARHOJ ApS, Denmark.


SKAARHOJ Booklet 2023, 1st edition.

That's a wrap!

Headquarter:
SKAARHOJ ApS | 2860 Soeborg | Denmark | +45 31 12 52 52

American Office:
SKAARHOJ Inc. | Burbank | California, USA | +1 (818) 395-7275

www.skaarhoj.com

Designed and Made in Denmark 



Booklet